

# BILL OF MATERIALS

#	QTY	DESCRIPTION	MATERIAL	THICKNESS	WIDTH	LENGTH	NOTES
1	2	Ends	Sheet Stock	$\frac{3}{4}$ "	14"		Use biscuits, nails, and glue
2	1	Top	Sheet Stock	$\frac{3}{4}$ "	14"		Use biscuits, pocket screws, nails, and glue
3	1	Bottom	Sheet Stock	$\frac{3}{4}$ "			Use biscuits, pocket screws, nails, and glue
4	1	Back	Sheet Stock	$\frac{3}{4}$ "			Use biscuits, pocket screws, nails, and glue
5	1	Drawer Front	Solid Stock	$\frac{3}{4}$ "			Screw Drawer Front to Drawer Box Using Screws Provided
6	1	Drawer Box Bottom	Sheet Stock				Use $\frac{3}{4}$ " finish nails or air nailer
7	2	Drawer Box Sides	Sheet Stock	$\frac{1}{2}$ "		12 $\frac{1}{4}$ "	Use 1" finish nails or air nailer
8	2	Drawer Box SubFront+Back	Sheet Stock				
9	2	Drawer Slides	Solid Stock	$\frac{3}{4}$ "	$\frac{3}{4}$ "	12 $\frac{1}{4}$ "	Use 1 $\frac{1}{4}$ " screws to attach to cabinet ends

NOTES:

## BILL OF MATERIAL INSTRUCTIONS

In this phase of the competition you will have to look at Sheets 3, 4 & 5.

You will have to calculate some dimensions while others are given.

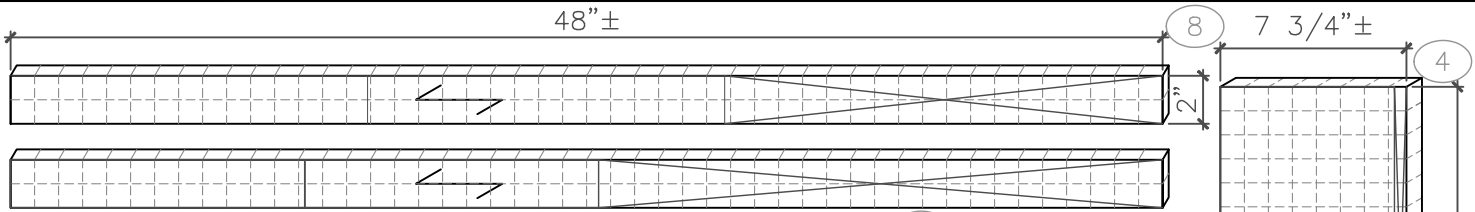
This portion of the competition is worth 75 of 1000 points.

ALL DIMENSIONS HAVE A  $\pm \frac{1}{32}$ " TOLERANCE

**SkillsUSA**  
CALIFORNIA  
REGIONAL CONTEST

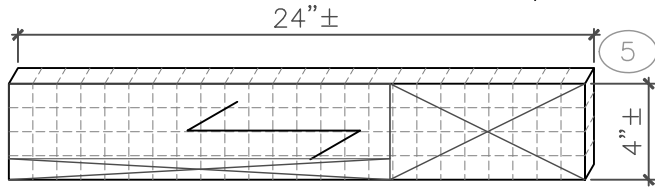
CABINETMAKING  
BILL OF  
MATERIALS

DATE:	2020	JOB #:	CM
DRAWN BY:	AK	SCALE:	NTS
DWG. NO.	1		



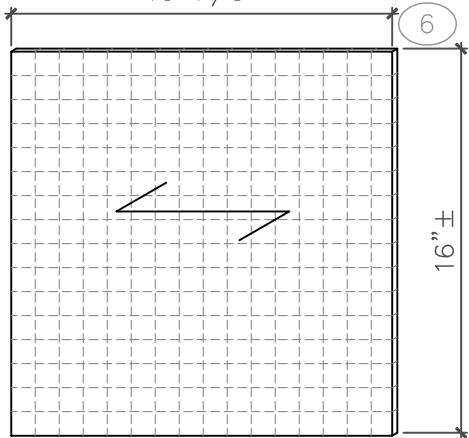
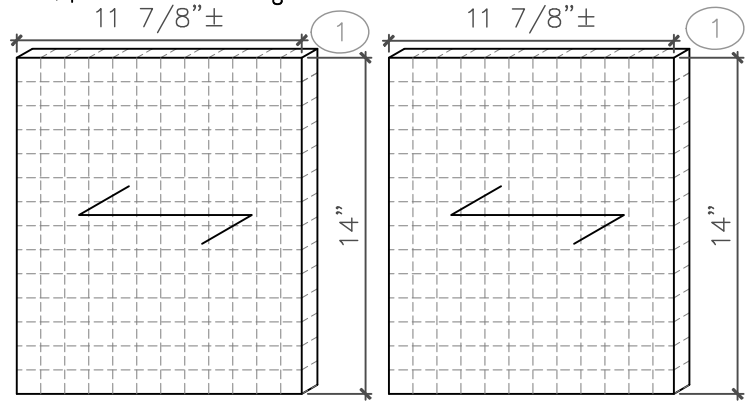
-YOU WILL RECEIVE TWO (2) PIECES OF SHEET STOCK FOR THE DRAWER BOX 2 @ 1/2" x 2" x 48"±

-YOU WILL RECEIVE ONE (1) PIECE OF SHEET STOCK FOR THE BACK 1 @ 3/4" x 16" x 7 3/4"±



-YOU WILL RECEIVE TWO (2) PIECES OF SHEET STOCK FOR THE TWO CABINET ENDS 1 @ 3/4" x 14" x 11 7/8"±

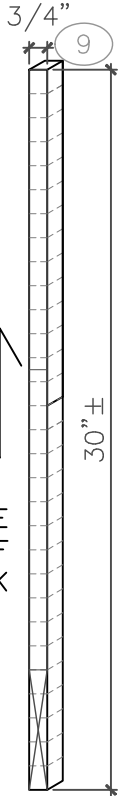
-YOU WILL RECEIVE ONE (1) PIECE OF SOLID STOCK FOR THE DRAWER FRONT 1 @ 3/4" x 4"± x 24"± 15 7/8"



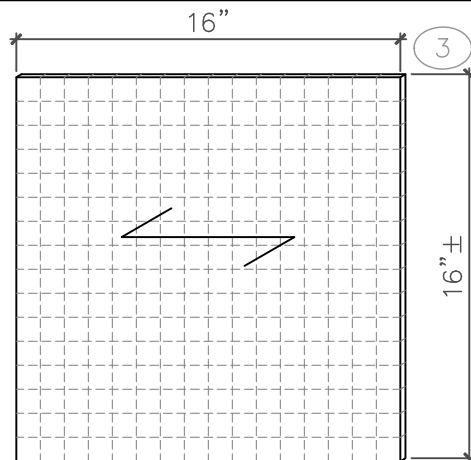
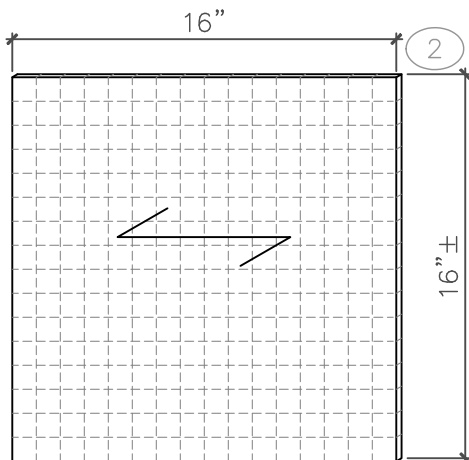
-YOU WILL RECEIVE ONE (1) PIECE OF SHEET STOCK FOR THE DRAWER BOTTOM 1 @ 1/4" x 15 7/8" x 16"±

**MATERIAL LAYOUT INSTRUCTIONS**

Once you've completed your Bill of Materials, lay out your parts on the corresponding material by drawing lines vertically and horizontally. Complete the 5 remaining pieces. This portion of the competition is worth 75 of 1000 points. Note: Each square is scaled to a 1" square.



-YOU WILL RECEIVE ONE (1) PIECE OF SOLID STOCK FOR THE DRAWER SLIDES 1 @ 3/4" x 3/4" x 30"±



-YOU WILL RECEIVE TWO (2) PIECES OF SHEET STOCK FOR THE TOP AND BOTTOM. 2 @ 3/4" x 16" x 16"±

## CABINET - INSTRUCTIONS

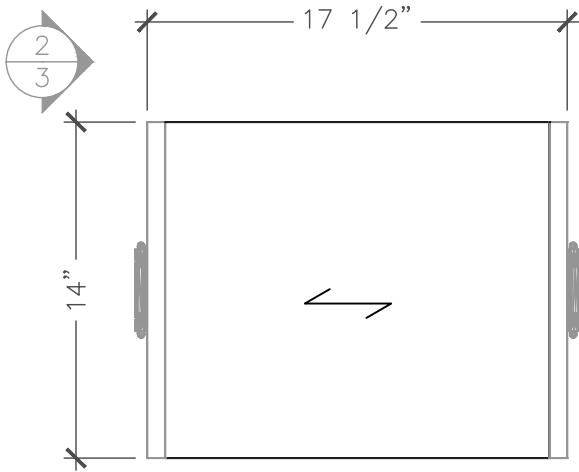
In this part of the contest you will take your sheet stock and cut it to make the Top, Bottom, Back, and Sides of your Portable Cabinet. Refer to page 2 the Material Layout page to determine which pieces of sheet stock to use for each cabinet part.

Use a biscuit joiner to insert 2-3 biscuits into the edge/side of each cabinet part.

Use wood glue with either pocket screws, finish nails, or clamps to connect your cabinet Top, Bottom, Back, and Sides.

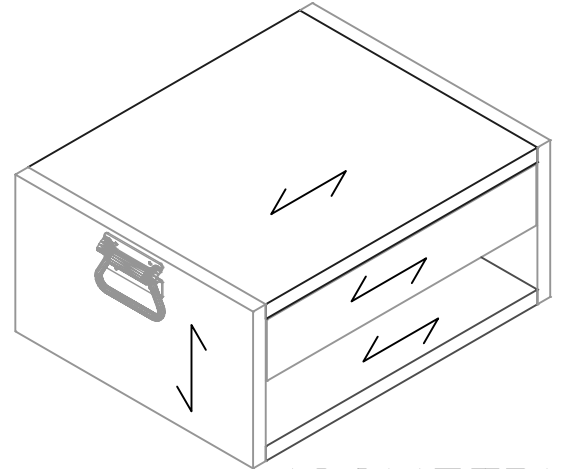
This component will be judged based on 765 points remaining from 1,000 max points available, based on measurements, machine skills, safety, neatness, completed product and finished product.

ALL DIMENSIONS HAVE A  $\pm \frac{1}{32}$ " TOLERANCE

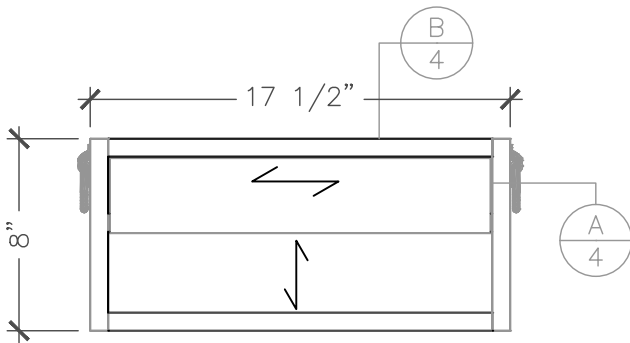


PLAN

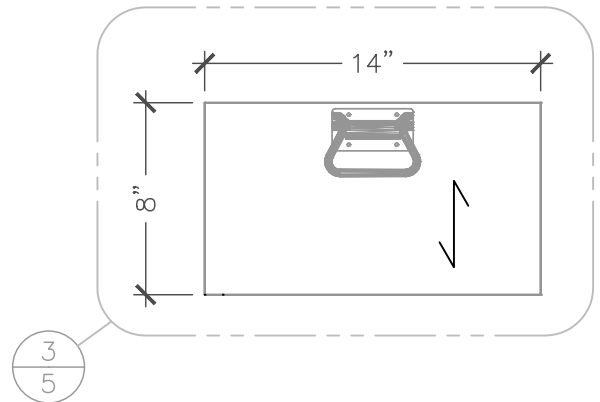
SCALE: 1-1/2"=1'-0"



ISOMETRIC



**1** ELEVATION  
SCALE: 1-1/2"=1'-0"



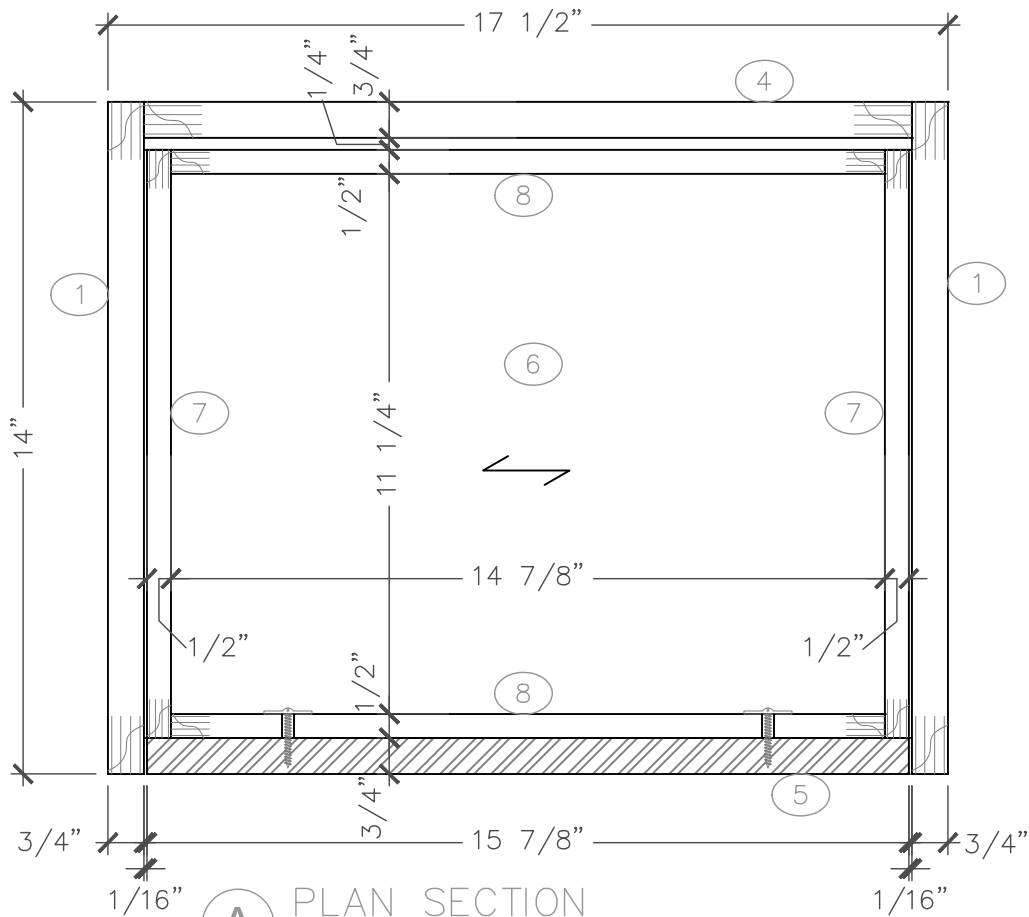
**2** ELEVATION  
SCALE: 1-1/2"=1'-0"

**SkillsUSA**  
CALIFORNIA  
REGIONAL CONTEST

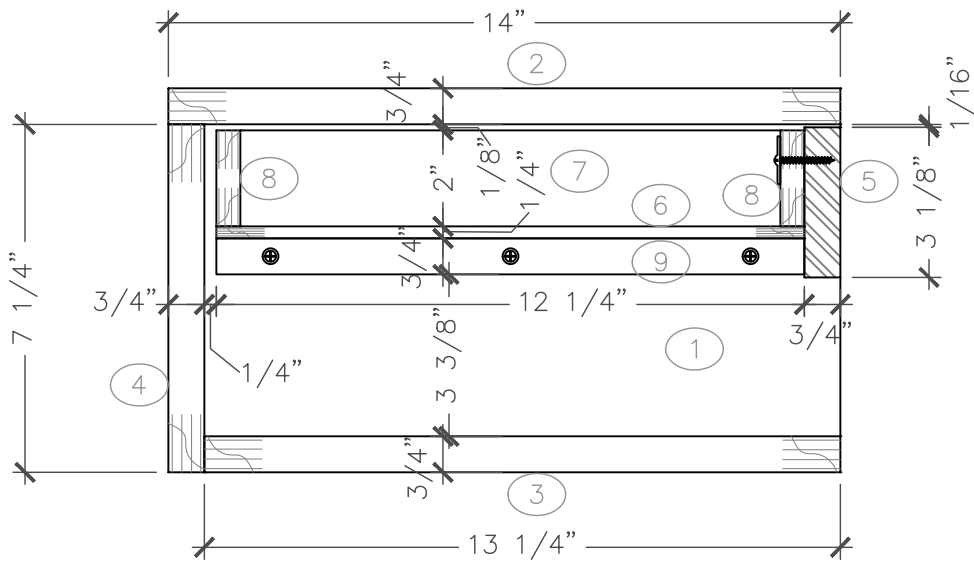
CABINETMAKING  
PORTABLE CABINET  
DRAWING

DATE: 2020	JOB #: CM
DRAWN BY: AK	SCALE: NTS

DWG. NO.  
3



**A** PLAN SECTION  
SCALE: 1"=1'-0"



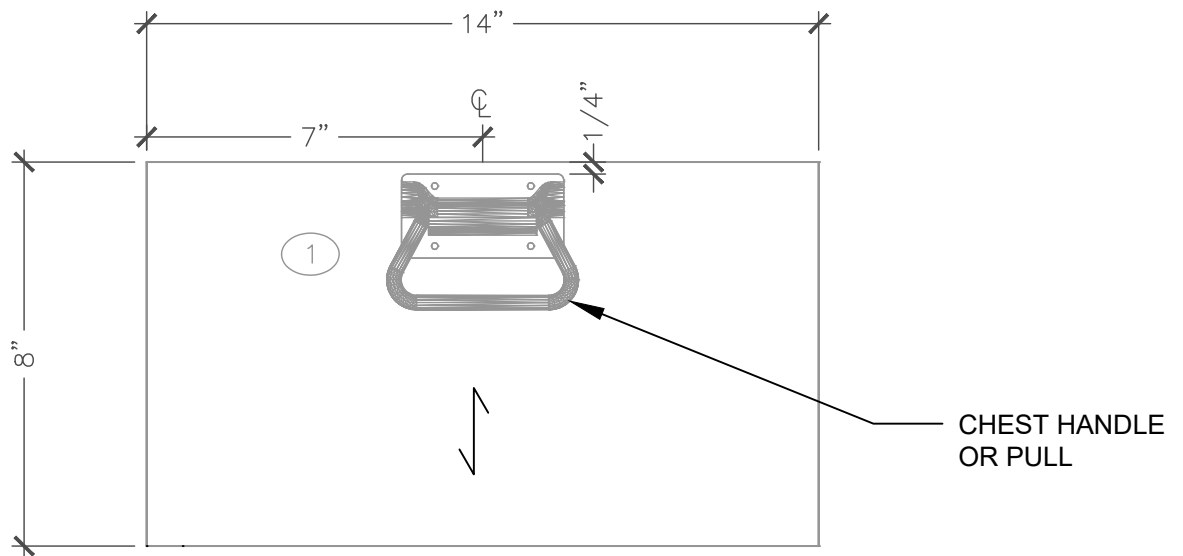
**B** VERT SECTION  
SCALE: 3"=1'-0"

**SkillsUSA**  
CALIFORNIA  
REGIONAL CONTEST

CABINETMAKING  
PORTABLE CABINET  
PLAN AND VERT. SECTION

DATE:	2020	JOB #:	CM
DRAWN BY:	AK	SCALE:	NTS

DWG. NO. 4



3 ELEVATION  
SCALE: 3"=1'-0"

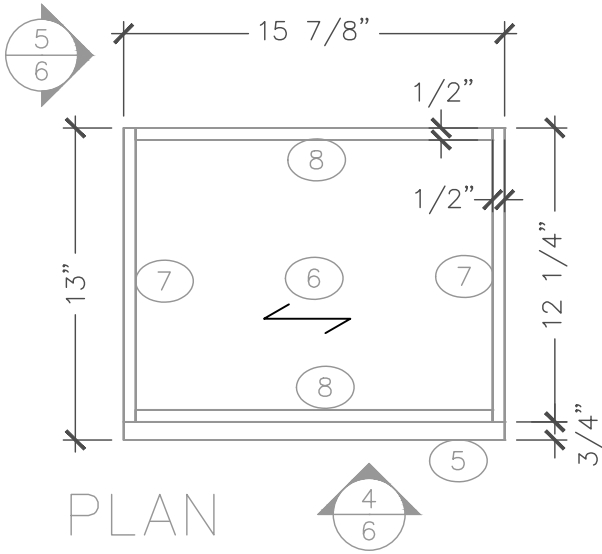
**SkillsUSA**  
CALIFORNIA  
REGIONAL CONTEST

CABINETMAKING  
PORTABLE CABINET  
SIDE ELEVATION

DATE: 2020	JOB #: CM
DRAWN BY: AK	SCALE: NTS

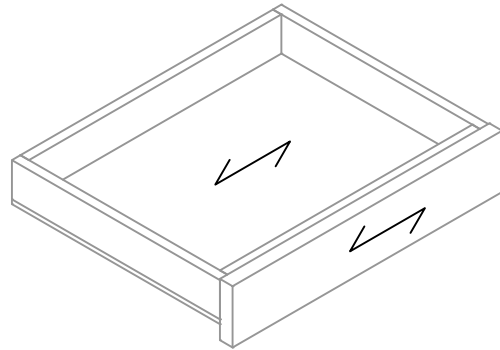
DWG. NO.  
5

Instructions: Use glue and an Air Nailer OR finish nails to assemble the Drawer Box Sides and Bottom. Attach the Drawer Front using two drawer front screws from the inside. Oversize the holes in the Drawer Box to allow for Drawer Front adjustments (see pg.4).

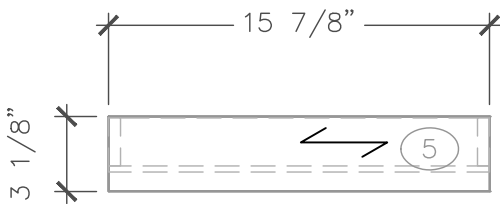


PLAN

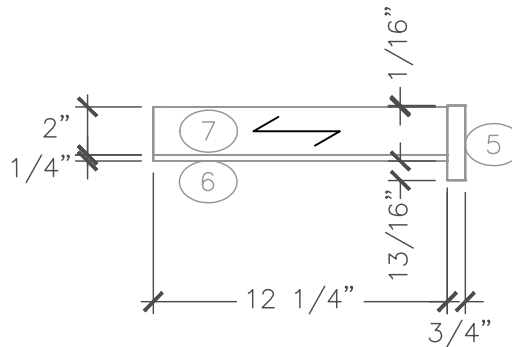
SCALE: 1-1/2"=1'-0"



ISOMETRIC



4 ELEVATION  
SCALE: 1-1/2"=1'-0"

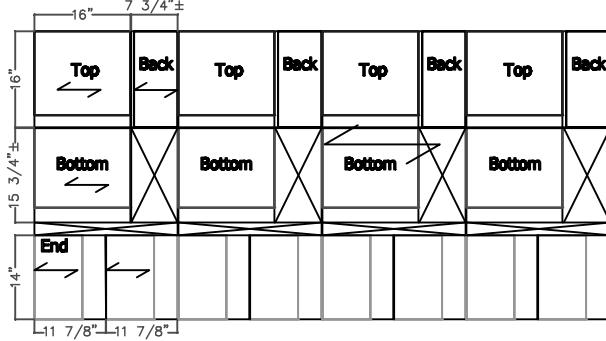


5 ELEVATION  
SCALE: 1-1/2"=1'-0"

# 2020 Regional Cabinetmaking Materials (20 Contestants) - Material

## CASE COMPONENTS

1 @  $\frac{3}{4}$ " x 16" x 16", 1 @  $\frac{3}{4}$ " x 15  $\frac{3}{4}$ " ± x 16",  
1 @  $\frac{3}{4}$ " x 16" x 7  $\frac{3}{4}$ " ±, 2 @ 14" x 11  $\frac{7}{8}$ " ±

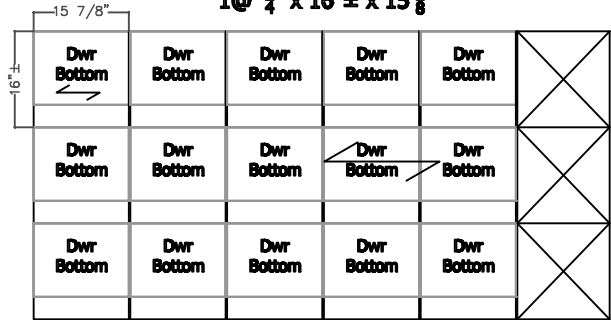


$\frac{3}{4}$ " PLYWOOD  
6 SHEETS

## SHEET STOCK

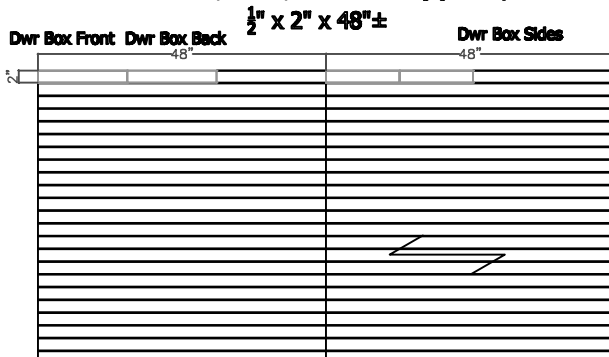
### DRAWER COMPONENTS

1 @  $\frac{1}{4}$ " x 16" ± x 15  $\frac{7}{8}$ "



$\frac{1}{4}$ " PLYWOOD OR MELAMINE  
2 SHEETS

### DRAWER BOX FRONT, BACK, AND SIDES (2) PCS per Student



$\frac{1}{2}$ " PLYWOOD  
1 or 2 SHEETS

### HARDWARE



CHEST HANDLES  
2 PER CONTESTANT

### SOLID STOCK

**DRAWER FRONT**  
1 @  $\frac{3}{4}$ " x 4" ± x 24" ±



**DRAWER SLIDE**  
1 @  $\frac{3}{4}$ " x  $\frac{3}{4}$ " x 30" ±



4 Solid Wood Boards, Finished @  $\frac{3}{4}$ " X 8" (or more)+ X 10' ±  
(need 20 pieces EACH for 20 contestants)

**SkillsUSA**  
CALIFORNIA  
REGIONAL CONTEST

CABINETMAKING  
PORTABLE CABINET  
COORDINATOR

DATE: 2020	JOB #: CM
DRAWN BY: AK	SCALE: NTS
DWG. NO. COORD	

# BILL OF MATERIALS

#	QTY	DESCRIPTION	MATERIAL	THICKNESS	WIDTH	LENGTH	NOTES
1	2	Ends	Sheet Stock	$\frac{3}{4}$ "	14"	8"	Use biscuits, nails, and glue
2	1	Top	Sheet Stock	$\frac{3}{4}$ "	14"	16"	Use biscuits, pocket screws, nails, and glue
3	1	Bottom	Sheet Stock	$\frac{3}{4}$ "	13 $\frac{1}{4}$ "	16"	Use biscuits, pocket screws, nails, and glue
4	1	Back	Sheet Stock	$\frac{3}{4}$ "	16"	7 $\frac{1}{4}$ "	Use biscuits, pocket screws, nails, and glue
5	1	Drawer Front	Solid Stock	$\frac{3}{4}$ "	3 $\frac{1}{8}$ "	15 $\frac{7}{8}$ "	Screw Drawer Front to Drawer Box Using Screws Provided
6	1	Drawer Box Bottom	Sheet Stock	$\frac{1}{4}$ "	12 $\frac{1}{4}$ "	15 $\frac{7}{8}$ "	Use 3/4" finish nails or air nailer
7	2	Drawer Box Sides	Sheet Stock	$\frac{1}{2}$ "	2"	12 $\frac{1}{4}$ "	Use 1" finish nails or air nailer
8	2	Drawer Box SubFront+Back	Sheet Stock	$\frac{1}{2}$ "	2"	14 $\frac{7}{8}$ "	
9	2	Drawer Slides	Solid Stock	$\frac{3}{4}$ "	$\frac{3}{4}$ "	12 $\frac{1}{4}$ "	Use 1 1/4" screws to attach to cabinet ends

NOTES:

# KEY

## BILL OF MATERIAL INSTRUCTIONS

In this phase of the competition you will have to look at Sheets 3, 4 & 5.

You will have to calculate some dimensions while others are given.

This portion of the competition is worth 75 of 1000 points.

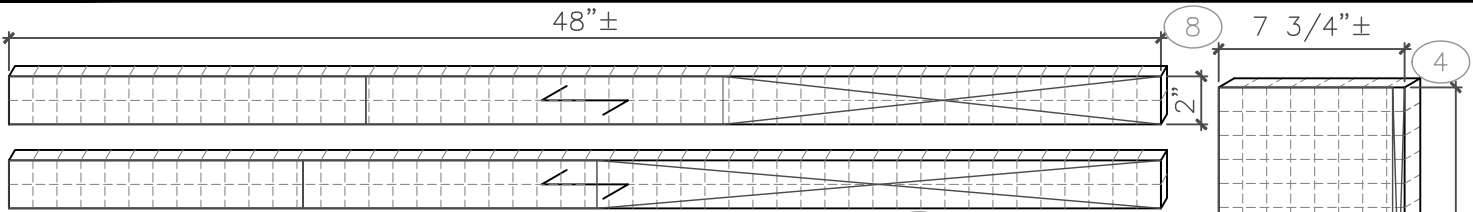
ALL DIMENSIONS HAVE A  $\pm \frac{1}{32}$ " TOLERANCE

**SkillsUSA**  
CALIFORNIA  
REGIONAL CONTEST

CABINETMAKING  
BILL OF  
MATERIALS KEY

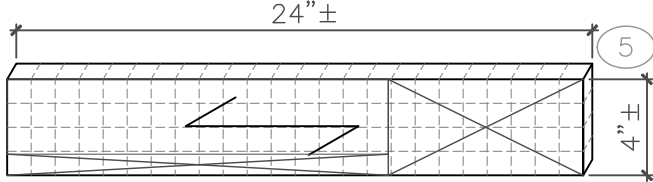
DATE: 2020	JOB #: CM
DRAWN BY: AK	SCALE: NTS
DWG. NO. 1 KEY	





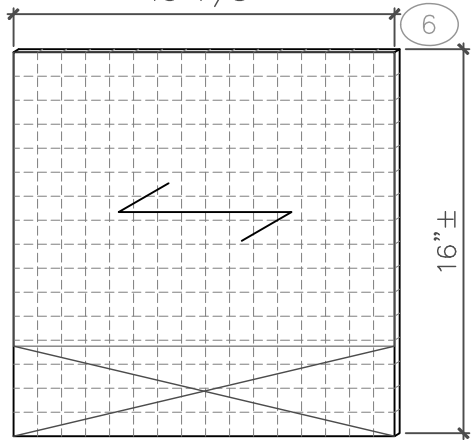
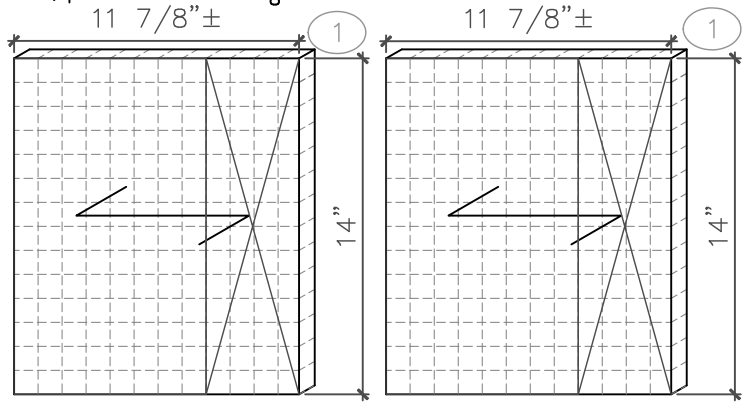
-YOU WILL RECEIVE TWO (2) PIECES OF SHEET STOCK FOR THE DRAWER BOX 2 @ 1/2" x 2" x 48"±

-YOU WILL RECEIVE ONE (1) PIECE OF SHEET STOCK FOR THE BACK 1 @ 3/4" x 16" x 7 3/4"±



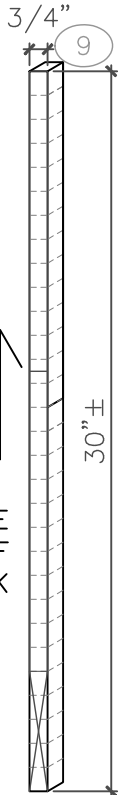
-YOU WILL RECEIVE ONE (1) PIECE OF SOLID STOCK FOR THE DRAWER FRONT 1 @ 3/4" x 4"± x 24"± 15 7/8"

-YOU WILL RECEIVE TWO (2) PIECES OF SHEET STOCK FOR THE TWO CABINET ENDS 1 @ 3/4" x 14" x 11 7/8"± 11 7/8"±

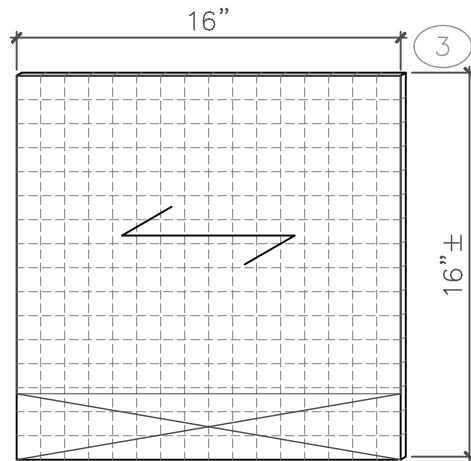
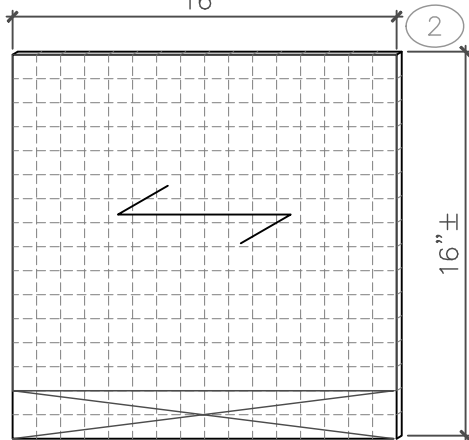


-YOU WILL RECEIVE ONE (1) PIECE OF SHEET STOCK FOR THE DRAWER BOTTOM 1 @ 1/4" x 15 7/8" x 16"±

MATERIAL LAYOUT INSTRUCTIONS  
**KEY**



-YOU WILL RECEIVE ONE (1) PIECE OF SOLID STOCK FOR THE DRAWER SLIDES 1 @ 3/4" x 3/4" x 30"±



-YOU WILL RECEIVE TWO (2) PIECES OF SHEET STOCK FOR THE TOP AND BOTTOM. 2 @ 3/4" x 16" x 16"±

**SkillsUSA**  
CALIFORNIA  
REGIONAL CONTEST

CABINETMAKING  
MATERIAL LAYOUT  
KEY

DATE: 2020	JOB #: CM
DRAWN BY: AK	SCALE: NTS
DWG. NO. 2 KEY	