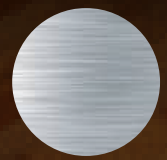


# UNIVERSUS BUNK BED



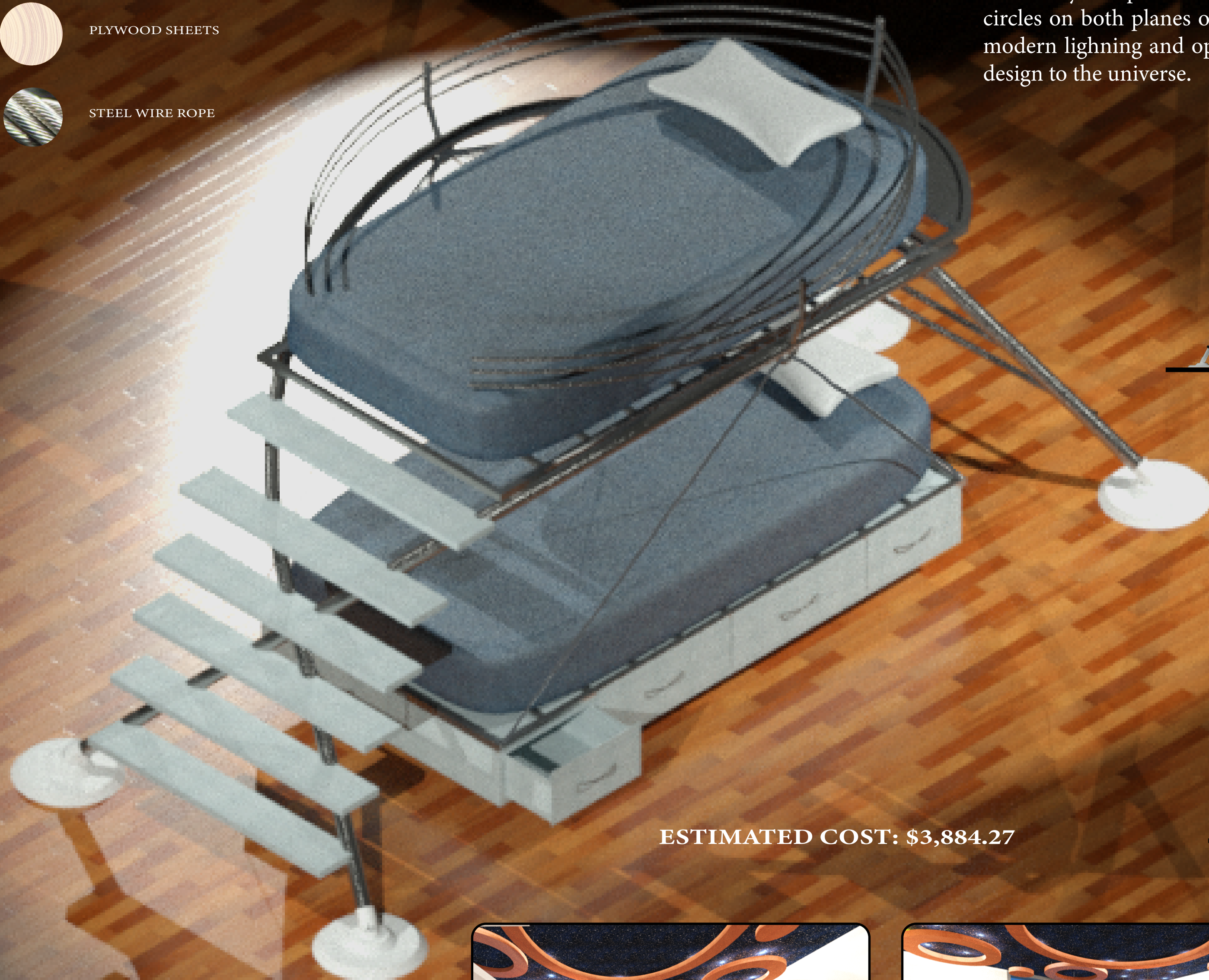
ALUMINIUM



PLYWOOD SHEETS

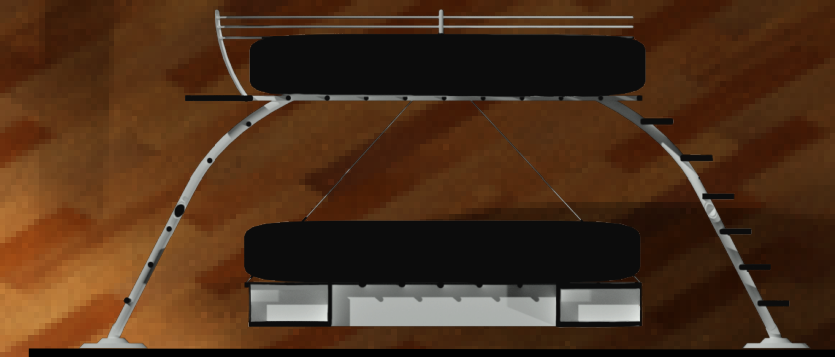


STEEL WIRE ROPE

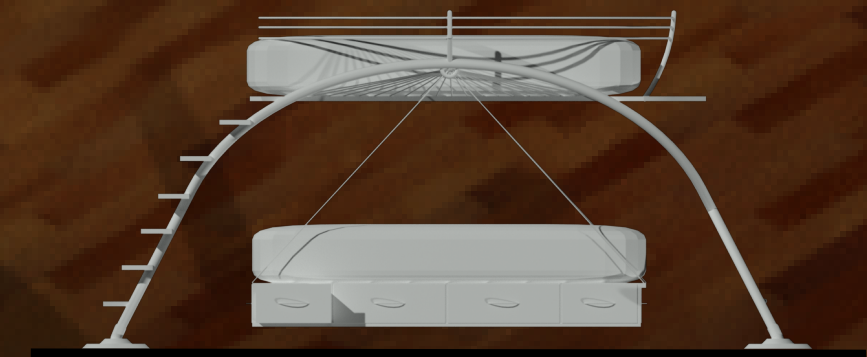


ESTIMATED COST: \$3,884.27

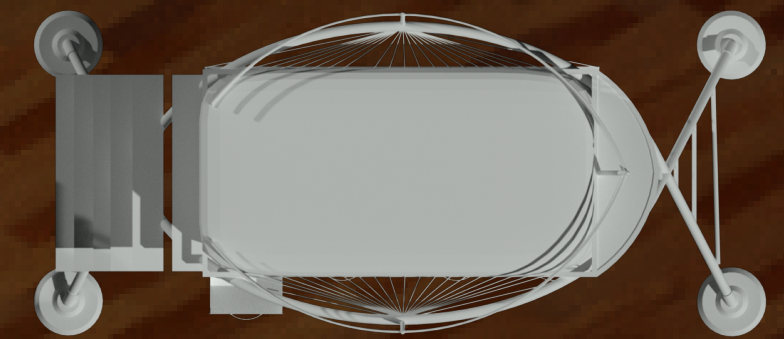
I decided to create a poetical representation of human imagination and how it transcends barriers. The bed itself possesses the shape of the traditional model of human DNA as a representation of the self. There is always a “window” that allows us to see beyond any limitation and the reach of that view lies within the potential of our imagination as I have demonstrated in this design. The simplicity of the room is a representation of how the world can manifest itself and be perceived by us. Having a visual representation of the universe in the ceiling provides the children with the opportunity to constantly compare their current perspective of the world with the potential of their reality. The circles on both planes of the room have a double purpose; they provide the room with a sense of modern lighting and openness, and they also poetically connect the DNA strand embedded in my design to the universe.



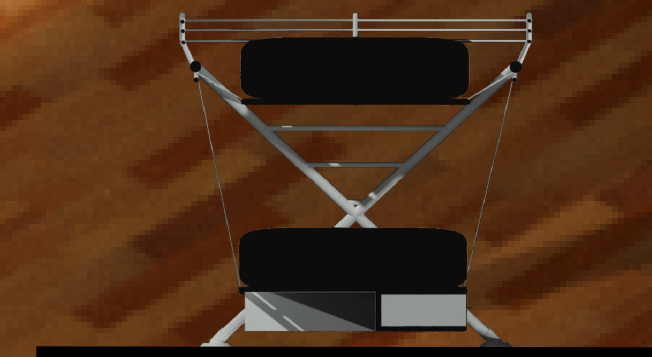
SECTION



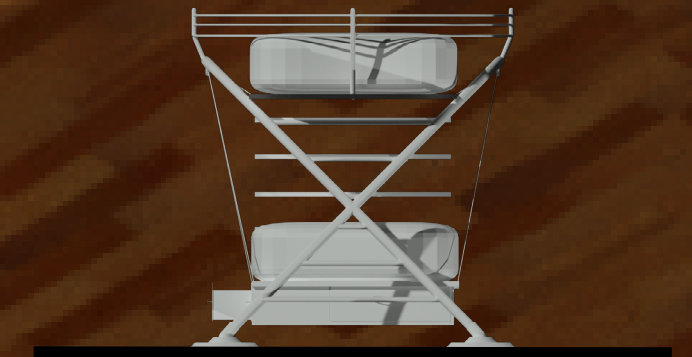
FRONT VIEW



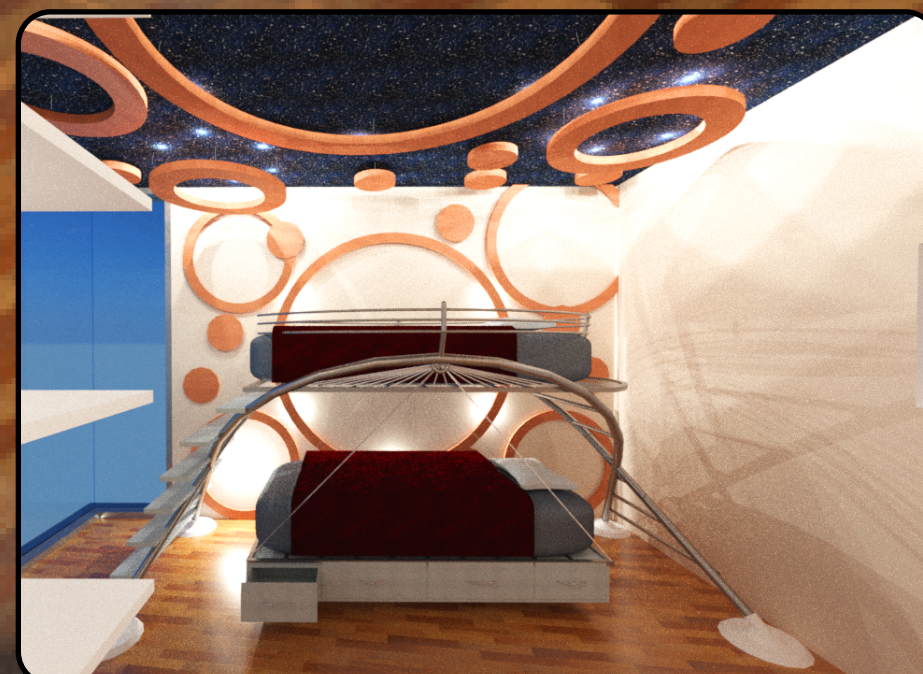
PLAN VIEW



SECTION



SIDE VIEW



Images rendered at children eye level (5')