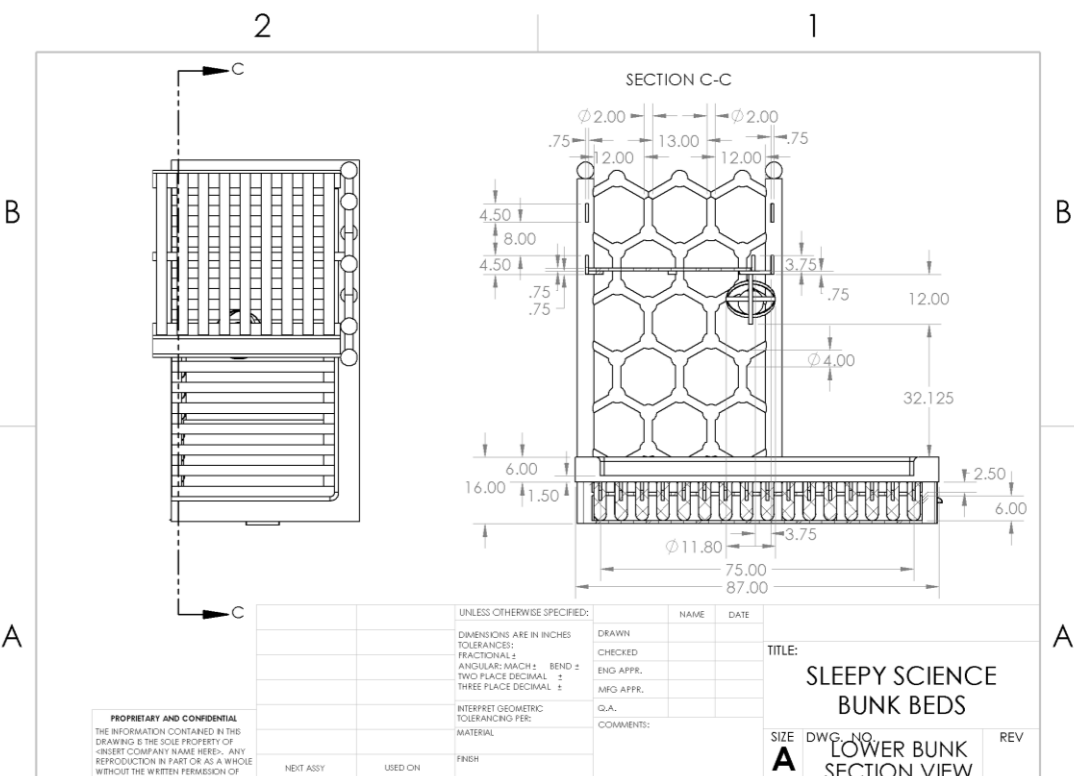
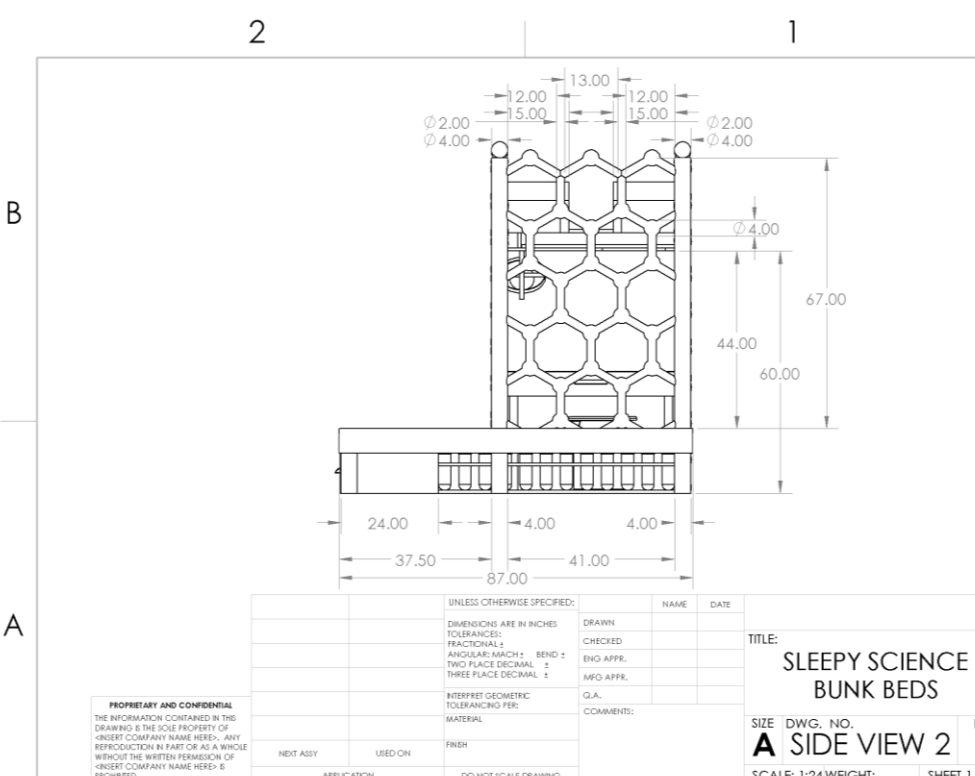
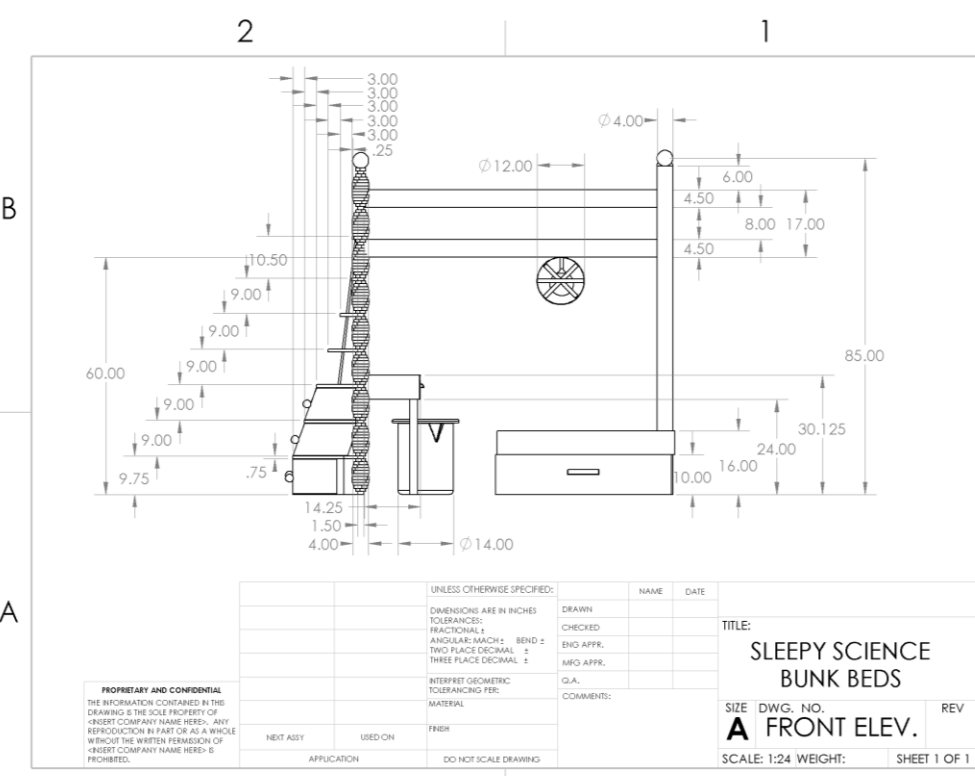
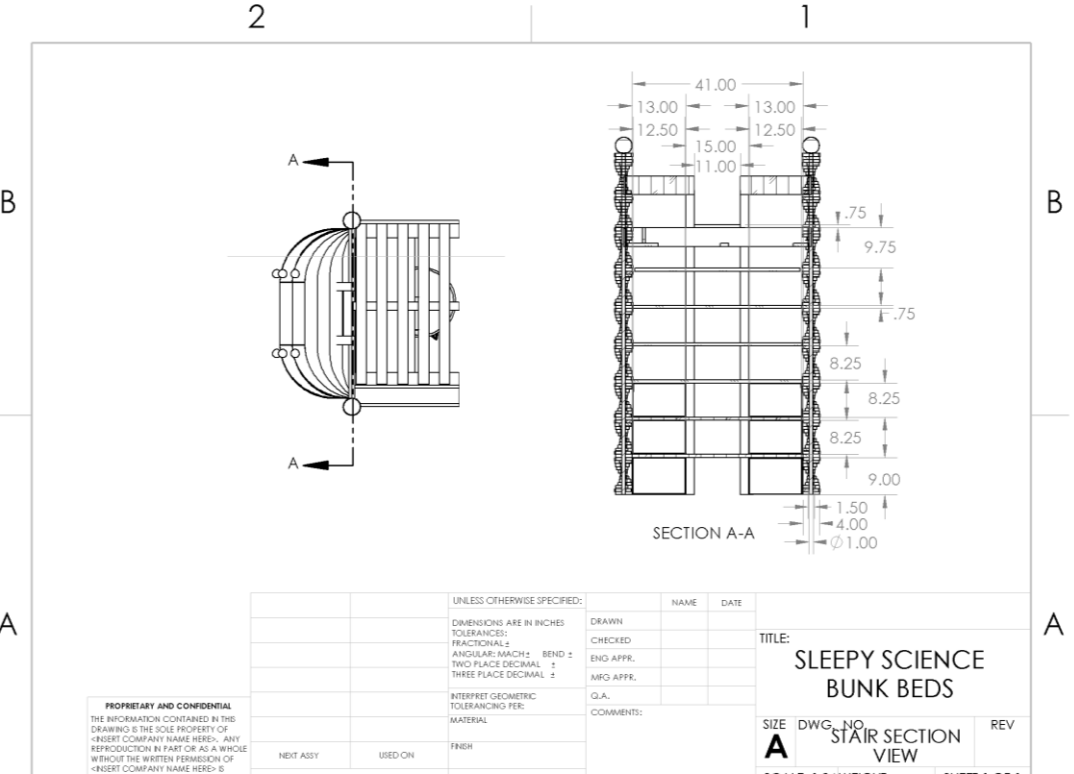
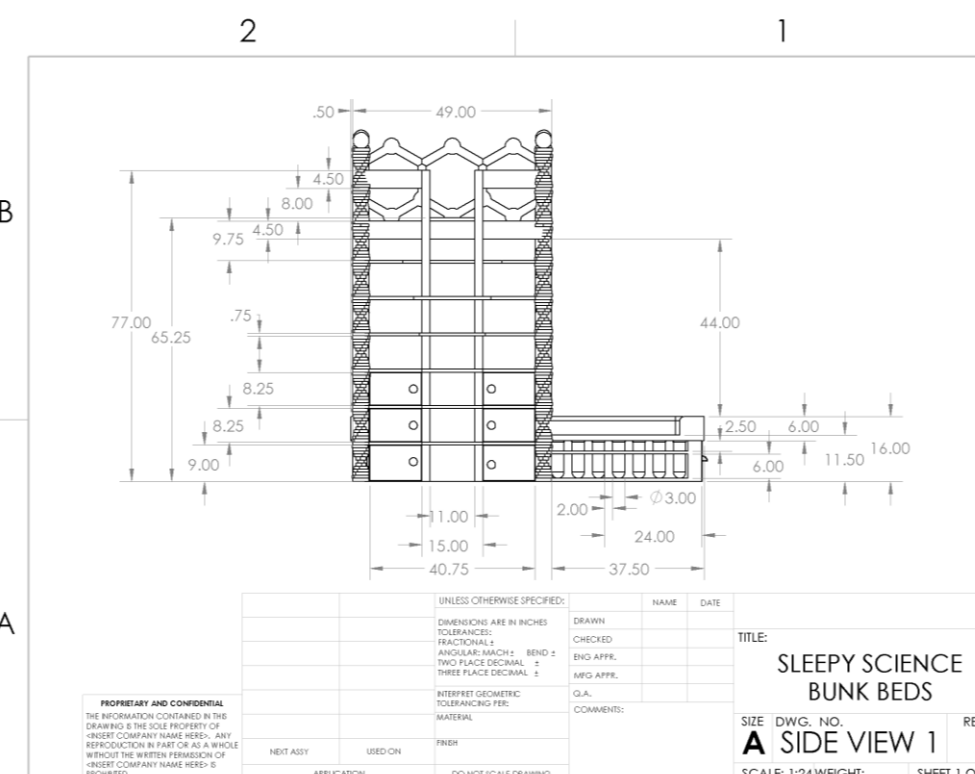
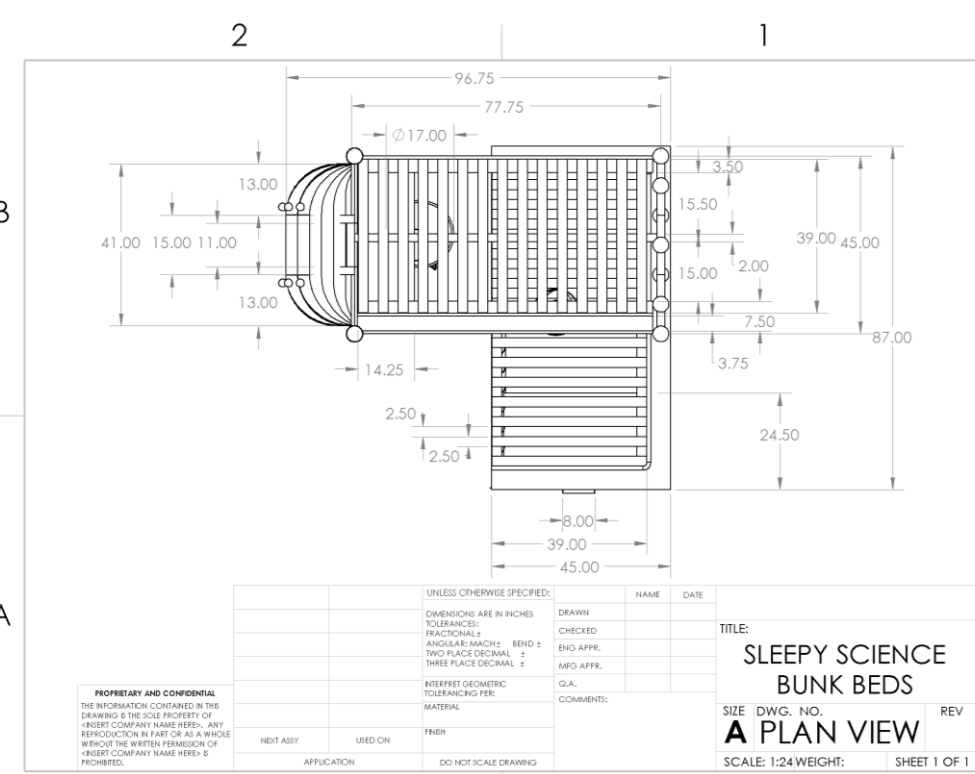
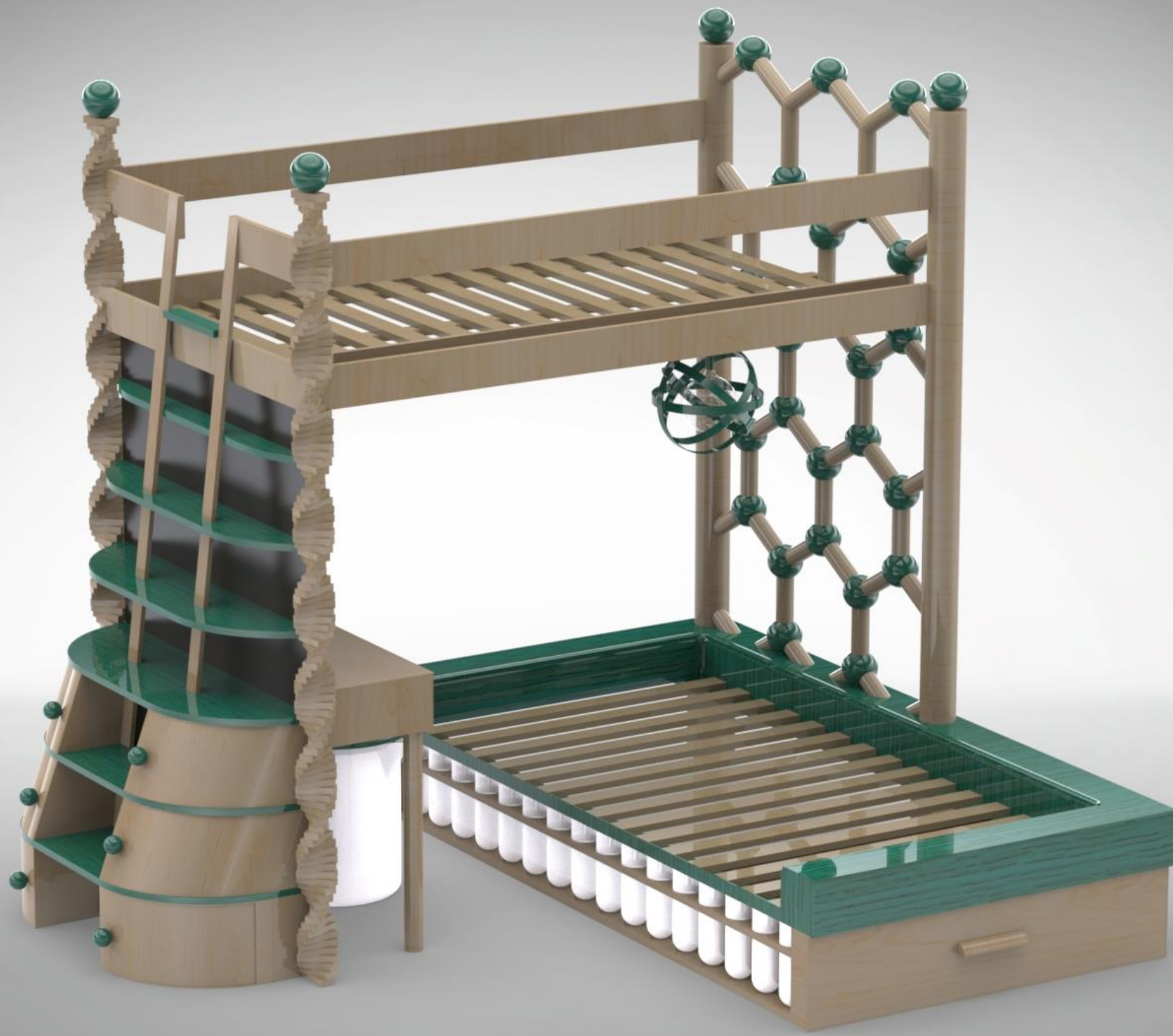


# Sleepy Science Bunk Beds

\$4557.49 - \$5292.32



Sleepy Science Bunk Beds combines playful accents with a quirky science theme to create a sleek design. Any set of science lovers will appreciate these bunk beds for years, with a theme and color palette that appeals to all ages and genders. Inspired by an interest in the role of design in science, I hoped to create an aesthetically appealing design fueled by science that children would enjoy. The perpendicular bed layout maximizes space and creates a fun play area underneath the loft that is accented by a simple desk with a large workspace and storage, beaker-shaped seat that can hold bulky items, and an atom shaped light fixture. A colorful glow is emitted from the LEDs in the larger-than-life test tube rack under the lower bed. The far set of bedposts are modeled to look like a molecular structure and the front ones resemble DNA strands, composed of cut 1x2 pieces assembled and rotated on a central pole. The ladder/stair hybrid piece provides an easy way up to the top bunk, and has 4 shelves and 3 drawers of varying size on each side. A wall between the shelving and desk is both a privacy divider and chalkboard, exciting to any budding scientist. Both beds have accompanying ledges to hold small items. Birch is used throughout for its strength, durability, and price point and the beds are finished with a resin coating, that is child-safe and allows for easy clean-up of any experiments-gone-wrong.