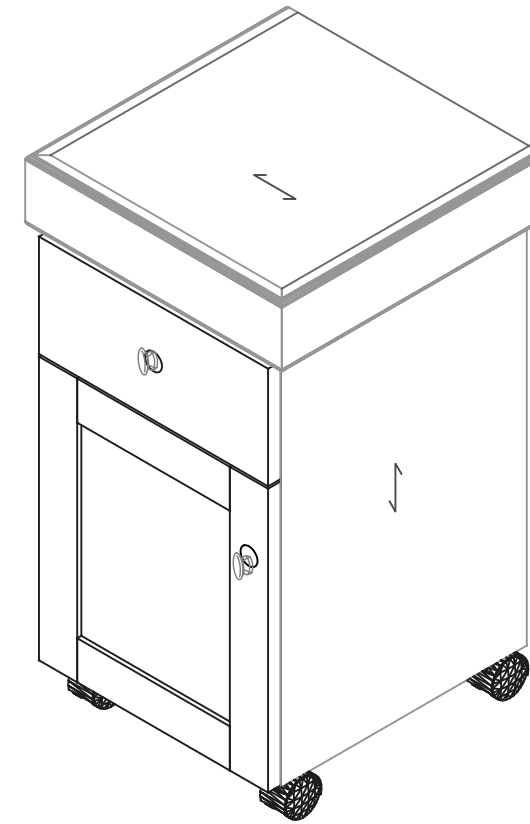
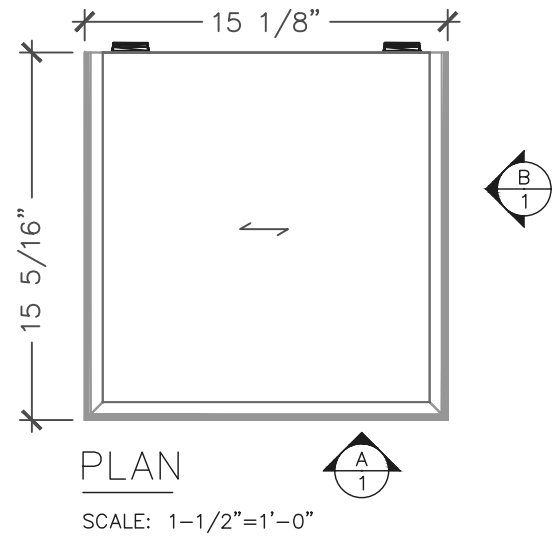
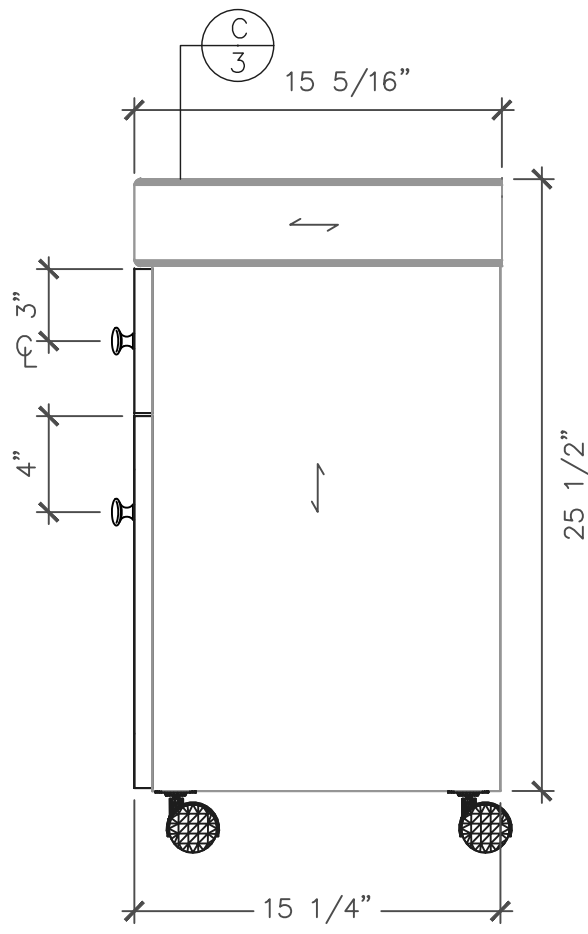
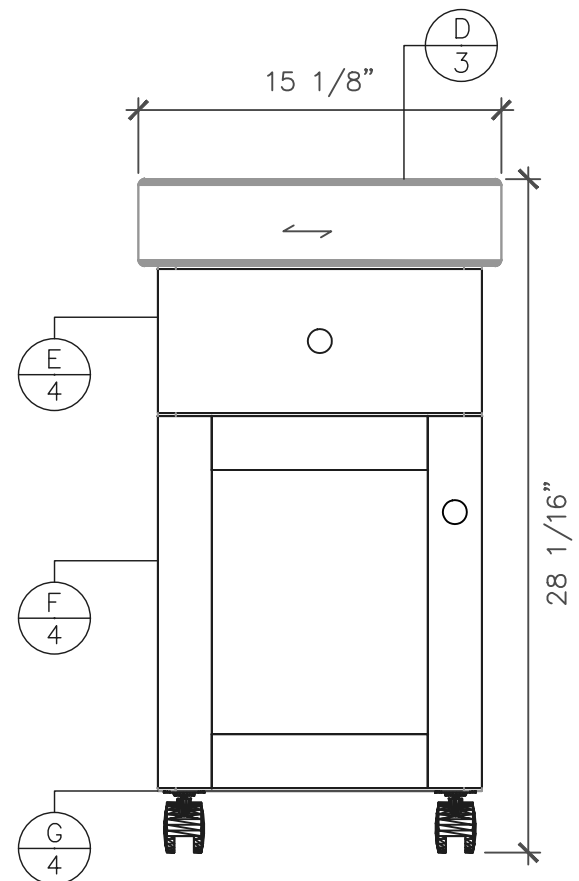


SkillsUSA

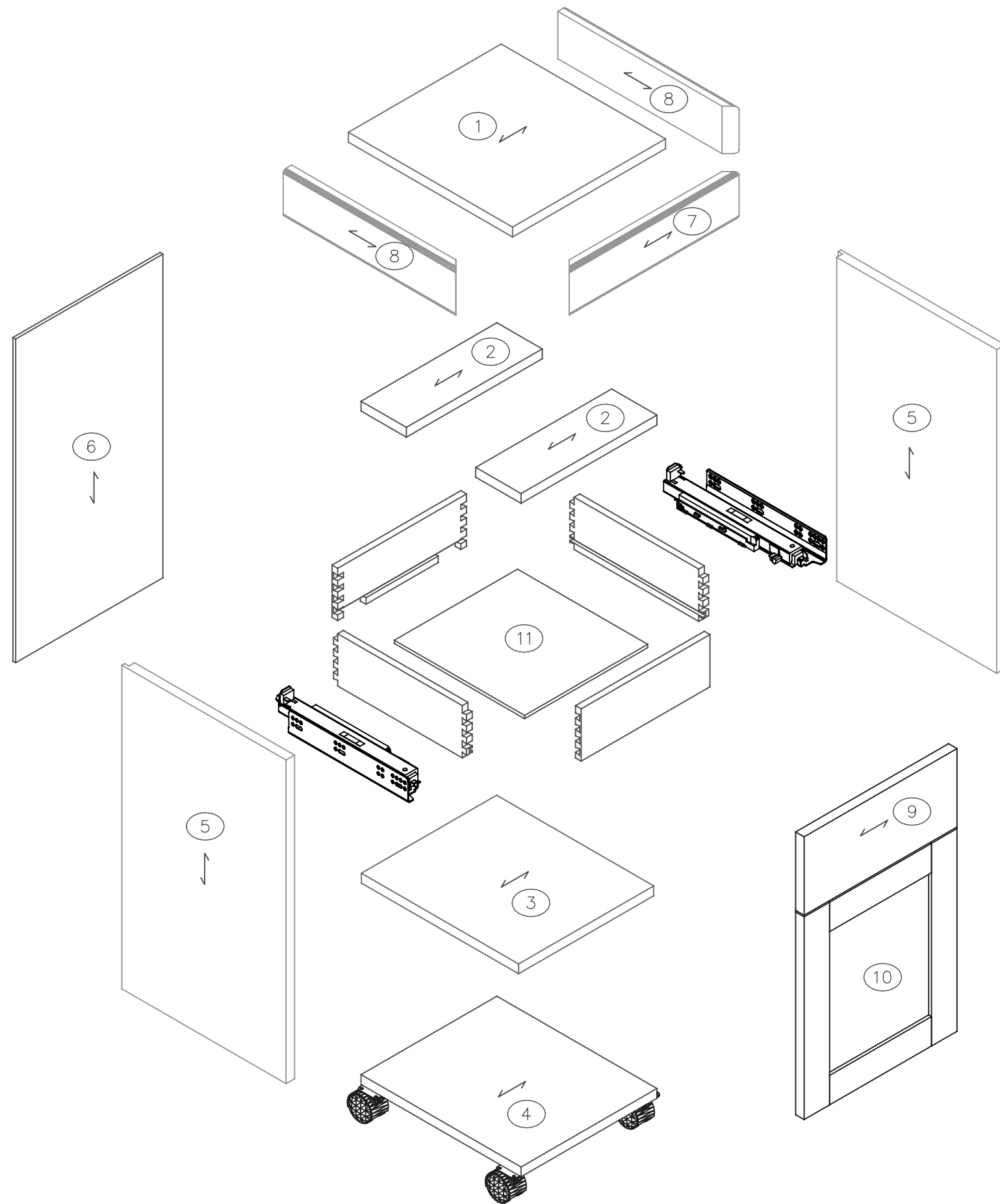
CALIFORNIA STATE CONTEST



ROLLING CABINET
ISOMETRIC: NTS



SkillsUSA CALIFORNIA STATE CONTEST	
ITEM: ROLLING CABINET	
DATE: APRIL	COMPETITION DATE: 2022
SCALE: AS NOTED	DWG #: 1
DRAWN BY: AK	
SPECIAL SPONSORS:	
 AWFS ASSOCIATION OF WOODWORKING & FURNISHINGS SUPPLIERS	 ARCHITECTURAL WOODWORKING COMPANY



YOU WILL RECEIVE :

PLYWOOD:

3 PCS @ $\frac{3}{4}$ " X $15 \frac{3}{4}$ " X $15 \frac{3}{4}$ " RWRL FOR PARTS ①③④

1 PC @ $\frac{3}{4}$ " X $9 \frac{1}{4}$ " X $15 \frac{3}{4}$ " RWRL FOR PARTS ②

2 PC @ $\frac{3}{4}$ " X $15 \frac{3}{4}$ " X $24 \frac{3}{4}$ " RW FOR PARTS ⑤

1 PC @ $\frac{1}{4}$ " X $15 \frac{3}{4}$ " X $24 \frac{3}{4}$ " RW FOR PART ⑥

SOLID:

1 PC OAK @ $\frac{3}{4}$ " X $4 \frac{1}{2}$ " ± X 48 " ± RWRL FOR PARTS ⑧⑦

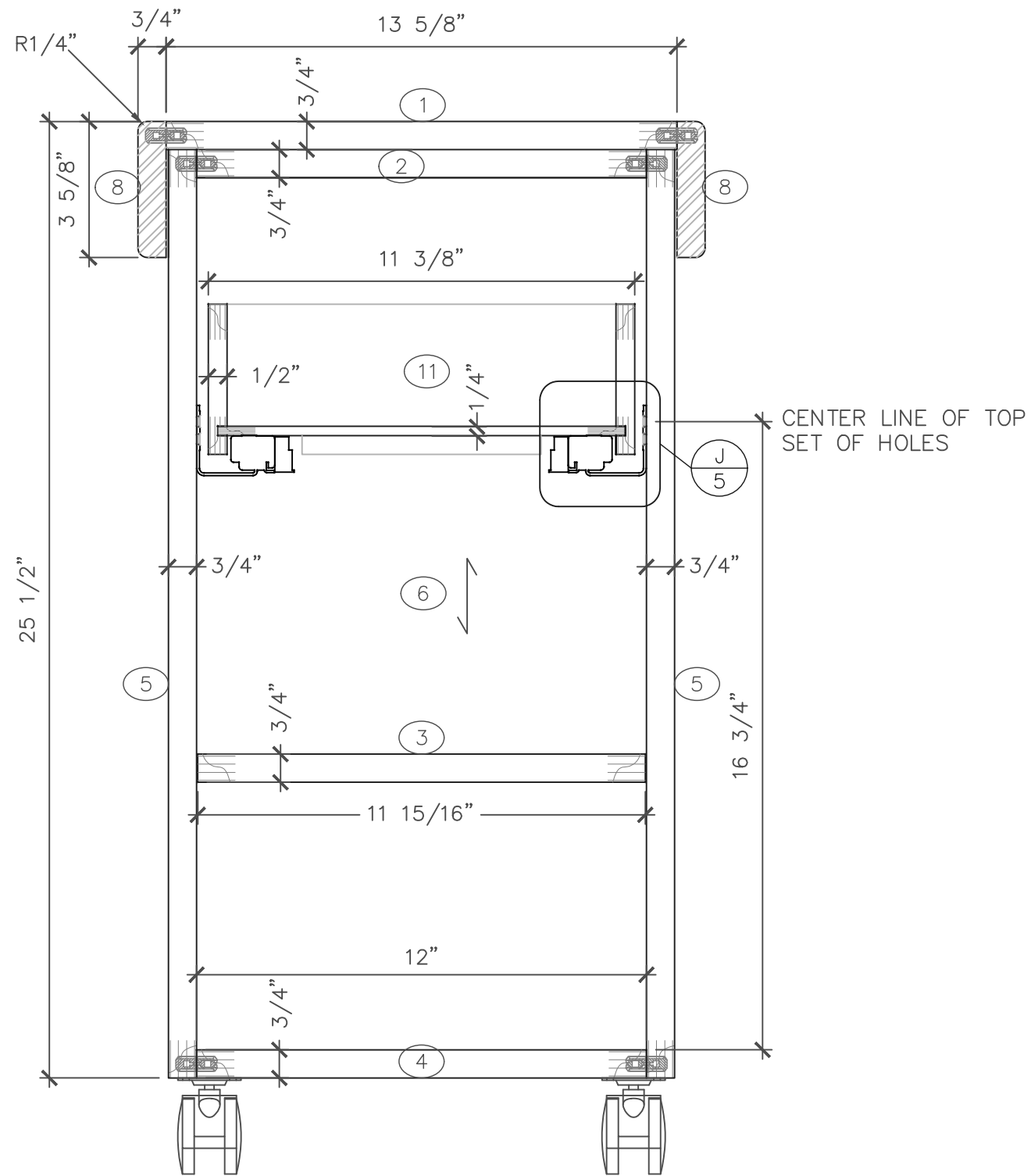
PRE-MADE:

1 PC @ $\frac{3}{4}$ " X 6 " X $13 \frac{1}{2}$ " FOR PART ⑨

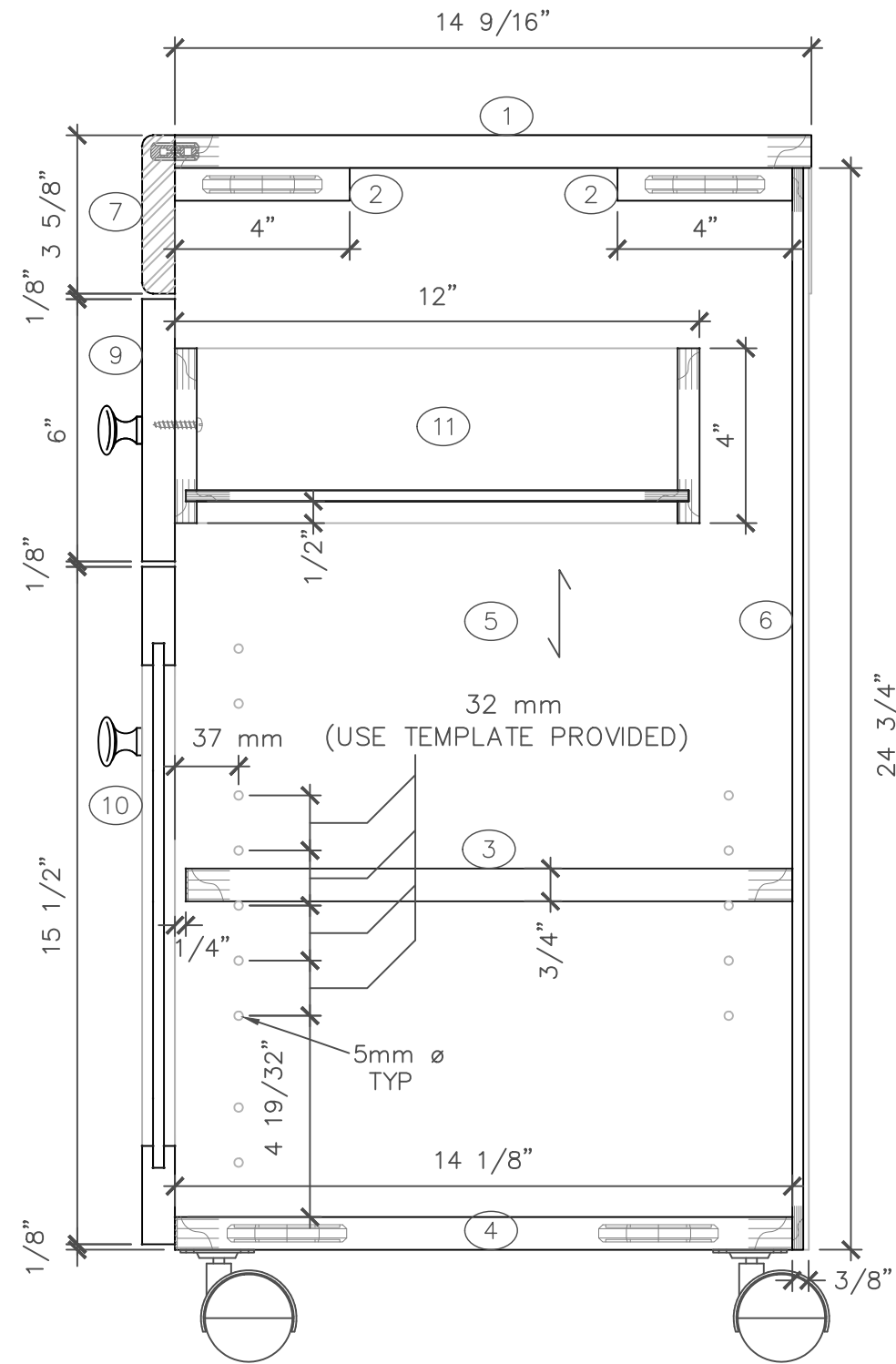
1 PC @ $\frac{3}{4}$ " X $15 \frac{1}{2}$ " X $13 \frac{1}{2}$ " FOR PART ⑩

DOVETAILED DRAWER BOX FROM KIT ⑪

SkillsUSA	
CALIFORNIA STATE CONTEST	
ITEM: ROLLING CABINET	
DATE: APRIL	COMPETITION DATE: 2022
SCALE: NTS	DWG #: 2
DRAWN BY: AK	
SPECIAL SPONSORS:	
 AWFS ASSOCIATION OF WOODWORKING & FURNISHINGS SUPPLIERS	 ARCHITECTURAL WOODWORKING COMPANY



C CABINET LONGITUDINAL SECTION
SCALE: 3"=1'-0"



D CABINET VERTICAL SECTION
SCALE: 3"=1'-0"

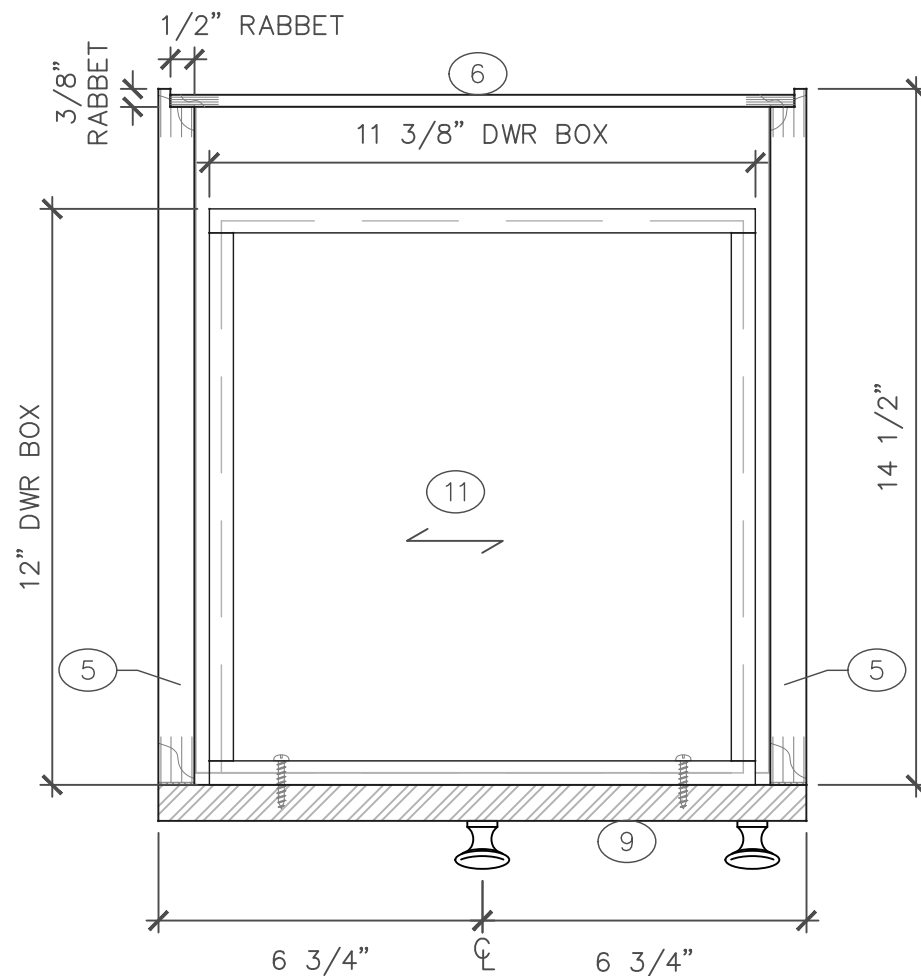
SkillsUSA
CALIFORNIA
STATE CONTEST

ITEM: ROLLING CABINET	
DATE: APRIL	COMPETITION DATE: 2022
SCALE: 3"=1'-0"	DWG #: 3
DRAWN BY: AK	

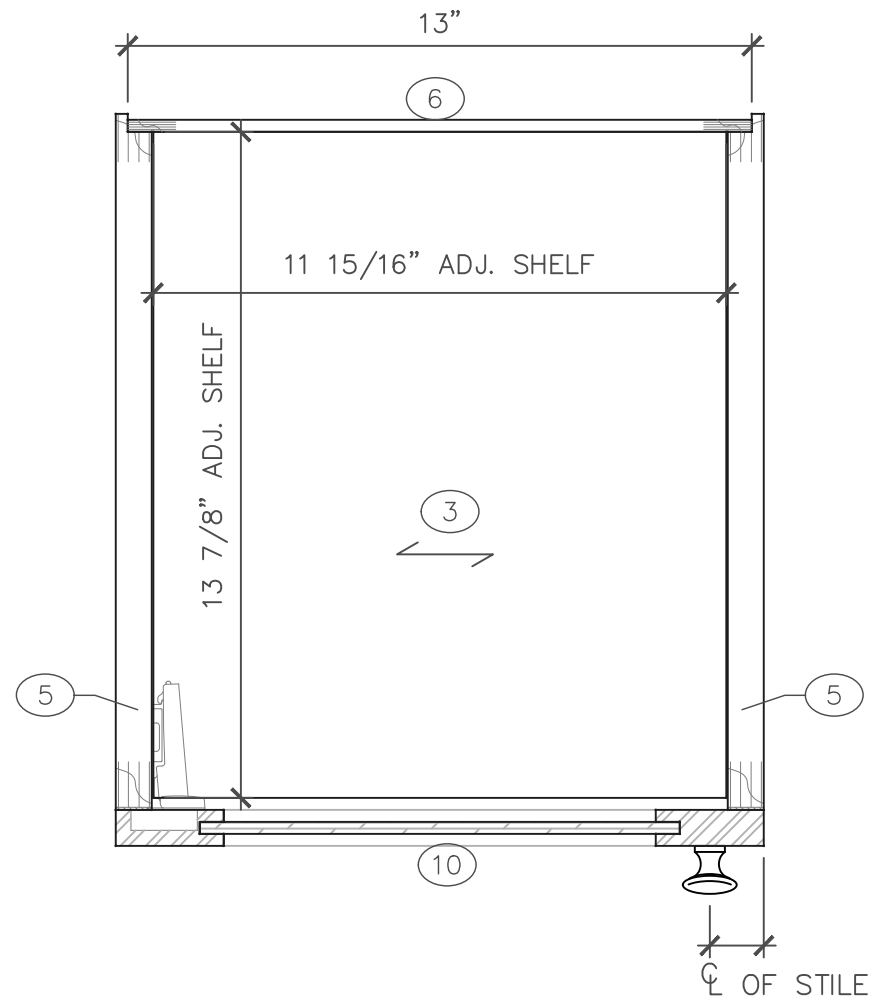
SPECIAL SPONSORS:

AWFS
ASSOCIATION OF
WOODWORKING
& FURNISHINGS
SUPPLIERS

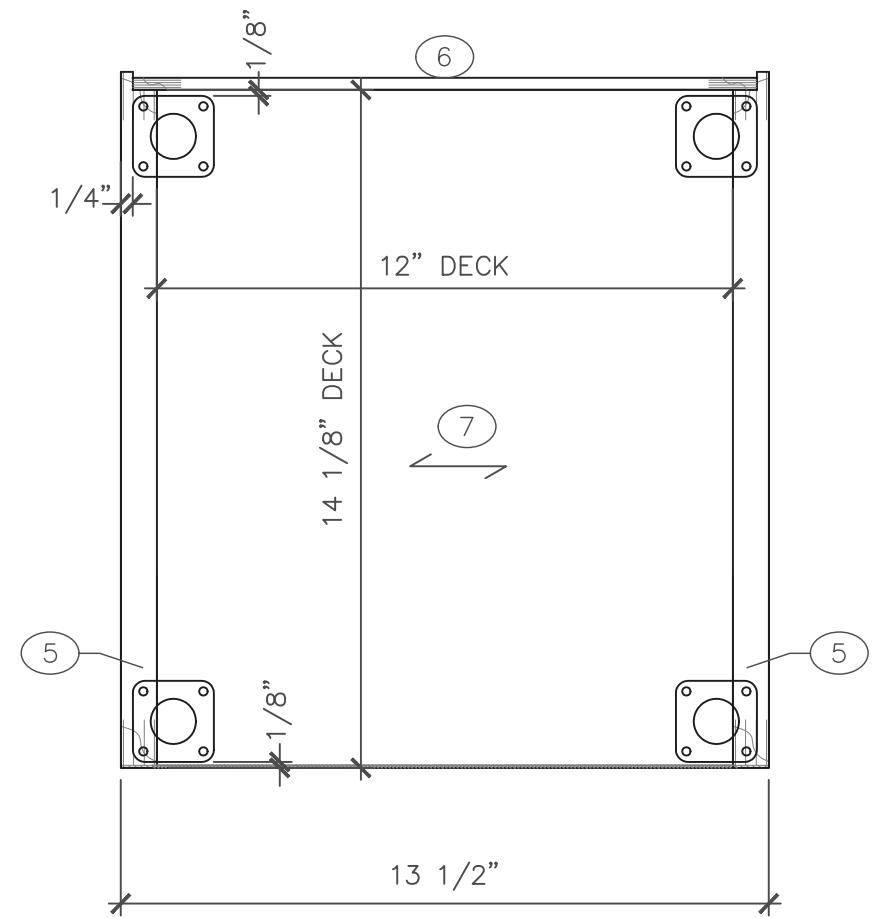
**ARCHITECTURAL
WOODWORKING
COMPANY**



E PLAN SECTION
SCALE: 3"=1'-0"



F PLAN SECTION
SCALE: 3"=1'-0"



G PLAN SECTION
SCALE: 3"=1'-0"

SkillsUSA
CALIFORNIA
STATE CONTEST

ITEM: ROLLING CABINET	
DATE: APRIL	COMPETITION DATE: 2022
SCALE: 3"=1'-0"	DWG #: 4
DRAWN BY: AK	

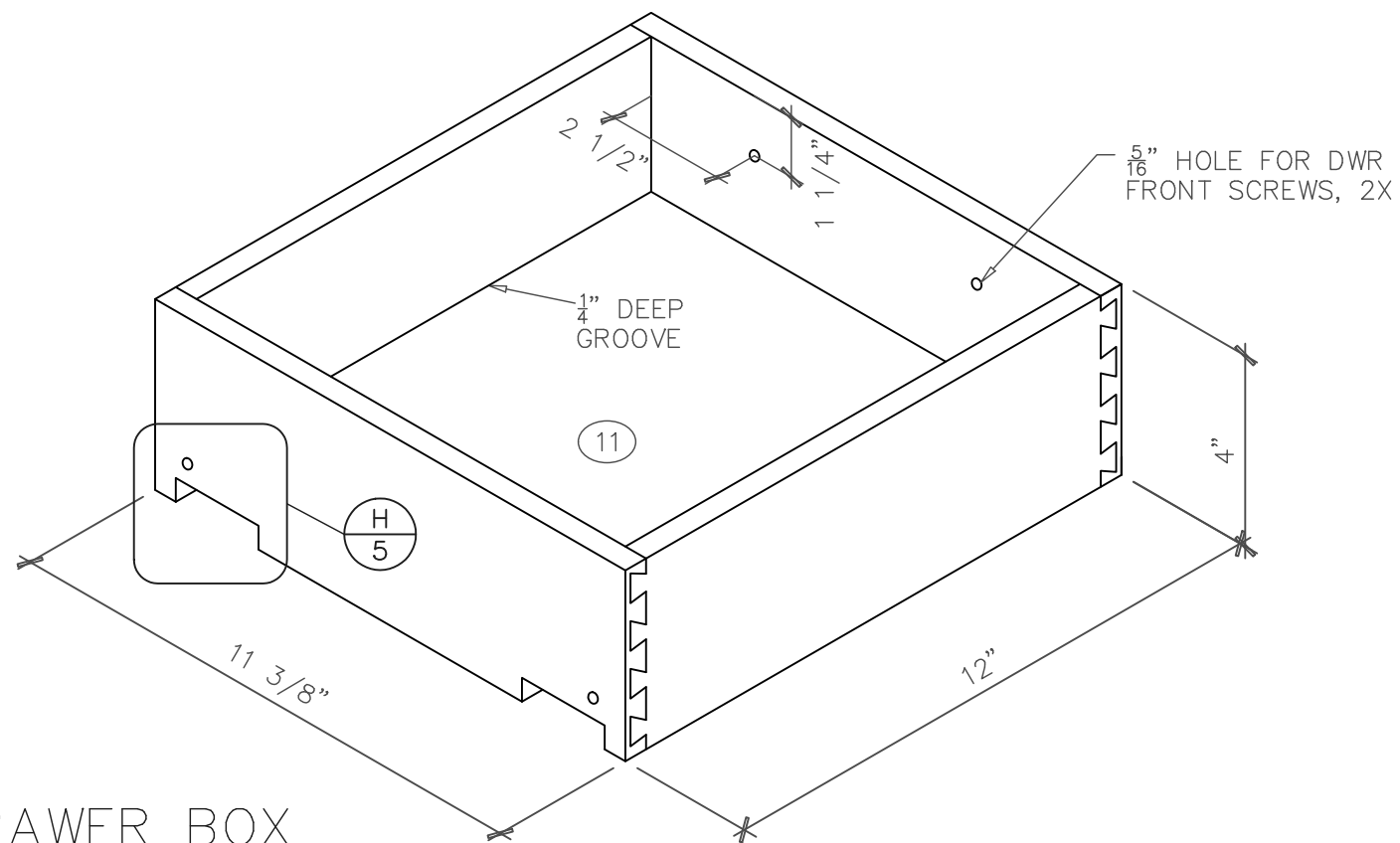
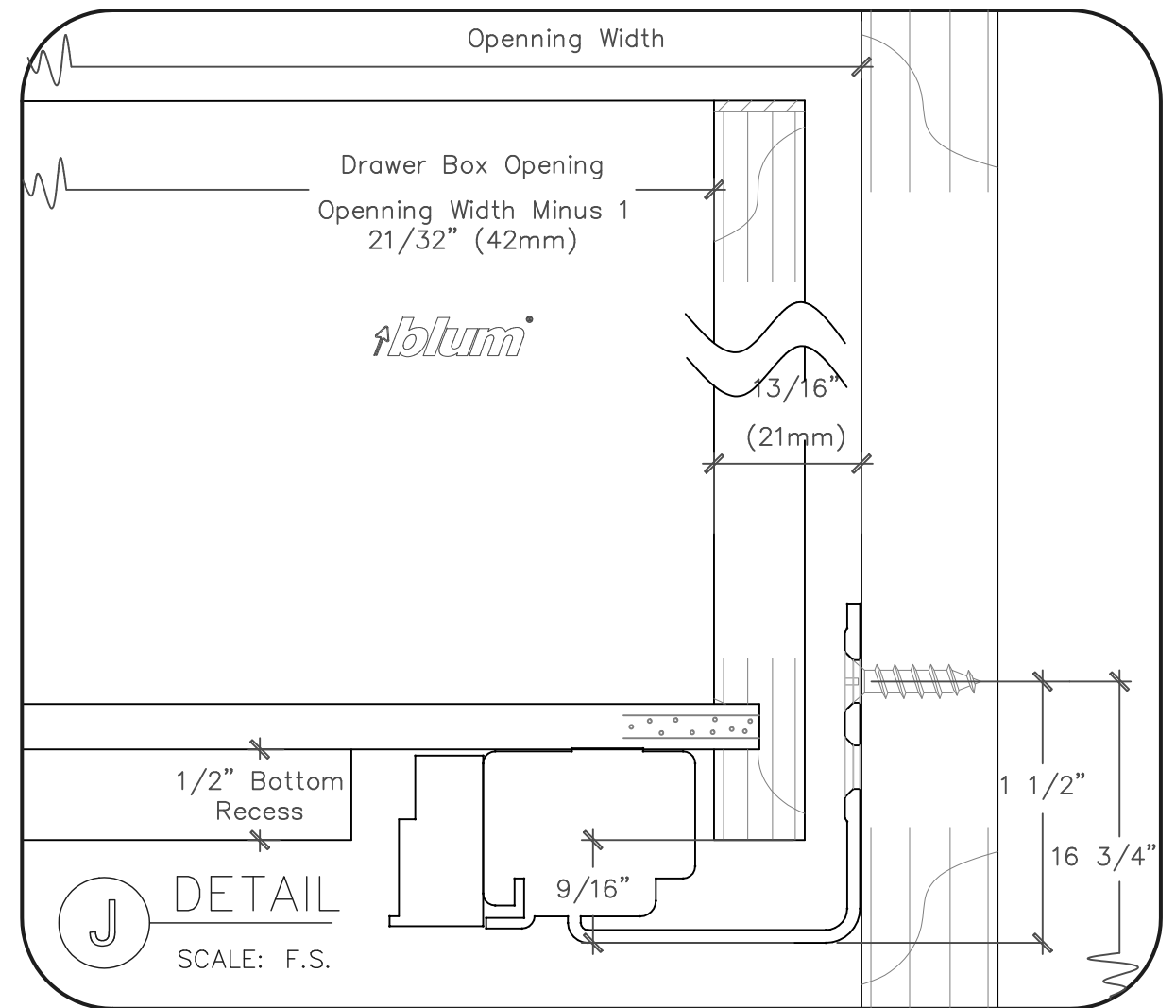
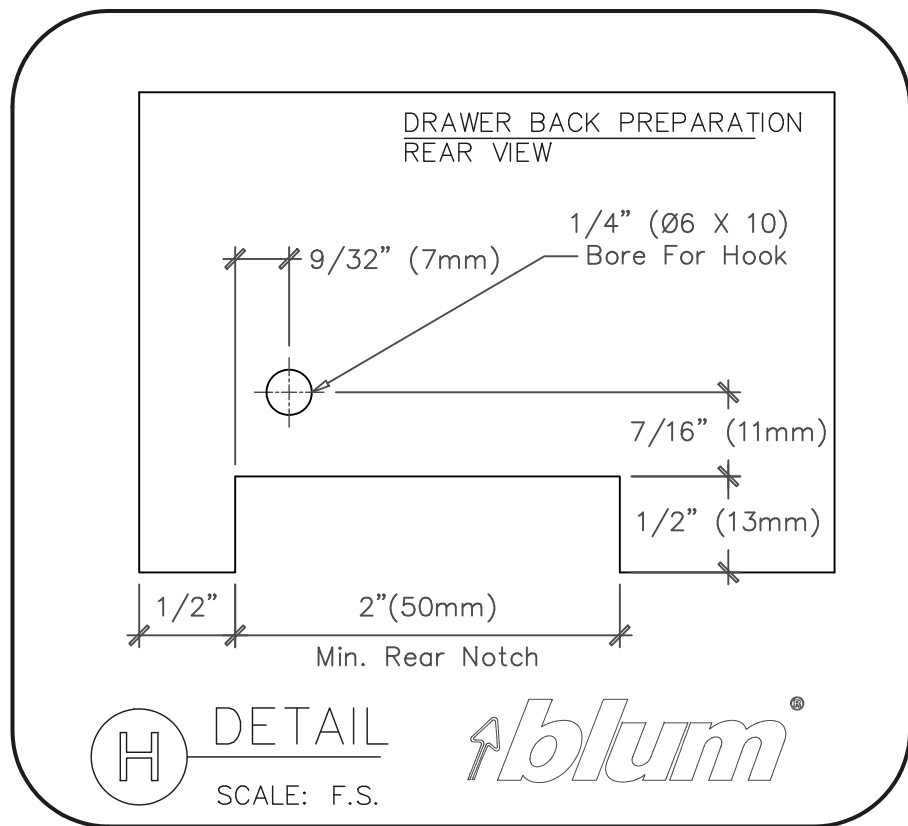
SPECIAL SPONSORS:



AWFS
ASSOCIATION OF
WOODWORKING
& FURNISHINGS
SUPPLIERS



**ARCHITECTURAL
WOODWORKING
COMPANY**



DRAWER BOX
ISOMETRIC: NTS
VIEW FROM BACK SIDE
NOTE HOLE & NOTCH FOR BLUM CLIPS

SkillsUSA
CALIFORNIA
STATE CONTEST

ITEM: ROLLING CABINET DRAWER BOX

DATE: APRIL	COMPETITION DATE: 2022
SCALE: AS NOTED	DWG #: 5
DRAWN BY: AK	

SPECIAL SPONSORS:

ASSOCIATION OF
WOODWORKING
& FURNISHINGS
SUPPLIERS

ARCHITECTURAL
WOODWORKING
COMPANY

NOTES:

BILL OF MATERIALS (5 POINTS EACH)

#	QTY	DESCRIPTION	MATERIAL	THICKNESS	WIDTH	LENGTH	NOTES
1	1	Worksurface	Red Oak Ply	$\frac{3}{4}$ "	$14 \frac{9}{16}$ "		
2	2	Cabinet Stretcher	Red Oak Ply	$\frac{3}{4}$ "		12"	
3	1	Adjustable Shelf	Red Oak Ply	$\frac{3}{4}$ "			Edge 1 Long
4	1	Cabinet Deck	Red Oak Ply	$\frac{3}{4}$ "		12"	Edge 1 Long
5	2	Cabinet Ends	Red Oak Ply	$\frac{3}{4}$ "			Edge 1 Long, Rabbet 1 Long
6	1	Cabinet Back	Red Oak Ply	$\frac{1}{4}$ "	13"		
7	1	Front Moulding	Solid Oak	$\frac{3}{4}$ "			Miter 2 Short, Route Profile
8	2	Side Moulding	Solid Oak	$\frac{3}{4}$ "			Miter 1 Short, Route Profile
9	1	Drawer Front	Pre-made	$\frac{3}{4}$ "		$13 \frac{1}{2}$ "	
10	1	Door	Pre-made	$\frac{3}{4}$ "	$13 \frac{1}{2}$ "		
11	1	Drawer Box	Kit of Parts	4"		12"	Kit of Parts

KEEP FOR CONTEST

BILL OF MATERIAL INSTRUCTIONS

In this phase of the competition you will have to look through the contest plans.

You will have to calculate some dimensions while others are given.

This portion of the competition is worth 75 of 1000 points.

ALL DIMENSIONS HAVE A $\pm \frac{1}{32}$ " TOLERANCE

SkillsUSA	
CALIFORNIA STATE CONTEST	
ITEM: ROLLING CABINET	
DATE: APRIL	COMPETITION DATE: 2022
SCALE:	DWG #: 6
DRAWN BY: AK	
SPECIAL SPONSORS:	
 AWFS ASSOCIATION OF WOODWORKING & FURNISHINGS SUPPLIERS	 ARCHITECTURAL WOODWORKING COMPANY

NOTES:

BILL OF MATERIALS (5 POINTS EACH)

#	QTY	DESCRIPTION	MATERIAL	THICKNESS	WIDTH	LENGTH	NOTES
1	1	Worksurface	Red Oak Ply	$\frac{3}{4}$ "	$14 \frac{9}{16}$ "		
2	2	Cabinet Stretcher	Red Oak Ply	$\frac{3}{4}$ "		12"	
3	1	Adjustable Shelf	Red Oak Ply	$\frac{3}{4}$ "			Edge 1 Long
4	1	Cabinet Deck	Red Oak Ply	$\frac{3}{4}$ "		12"	Edge 1 Long
5	2	Cabinet Ends	Red Oak Ply	$\frac{3}{4}$ "			Edge 1 Long, Rabbet 1 Long
6	1	Cabinet Back	Red Oak Ply	$\frac{1}{4}$ "	13"		
7	1	Front Moulding	Solid Oak	$\frac{3}{4}$ "			Miter 2 Short, Route Profile
8	2	Side Moulding	Solid Oak	$\frac{3}{4}$ "			Miter 1 Short, Route Profile
9	1	Drawer Front	Pre-made	$\frac{3}{4}$ "		$13 \frac{1}{2}$ "	
10	1	Door	Pre-made	$\frac{3}{4}$ "	$13 \frac{1}{2}$ "		
11	1	Drawer Box	Kit of Parts	4"		12"	Kit of Parts

SUBMIT TO JUDGE

BILL OF MATERIAL INSTRUCTIONS

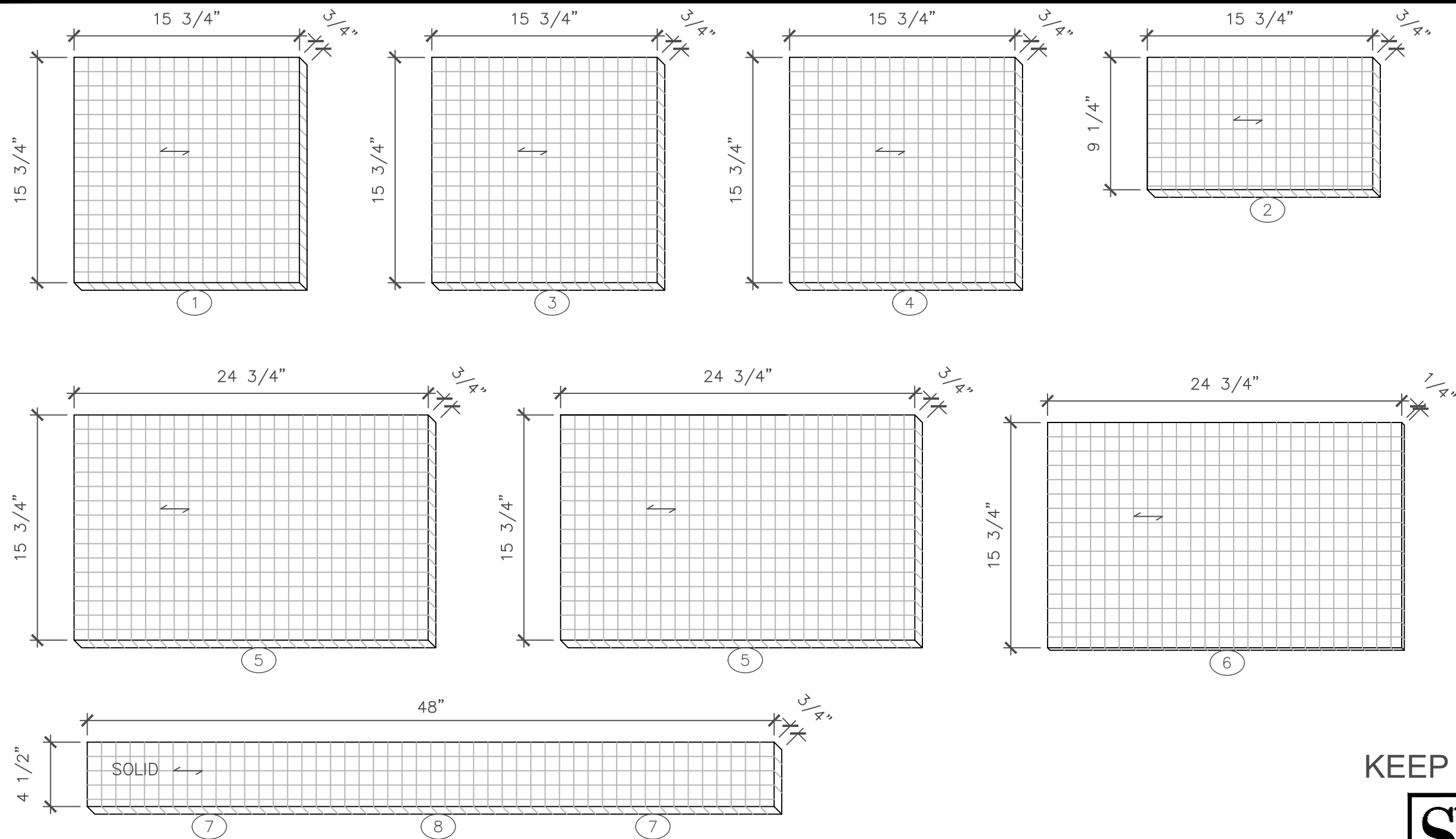
In this phase of the competition you will have to look through the contest plans.

You will have to calculate some dimensions while others are given.

This portion of the competition is worth 75 of 1000 points.

ALL DIMENSIONS HAVE A $\pm \frac{1}{32}$ " TOLERANCE

SkillsUSA	
CALIFORNIA STATE CONTEST	
ITEM: ROLLING CABINET	
DATE: APRIL	COMPETITION DATE: 2022
SCALE:	DWG #: 6A
DRAWN BY: AK	
SPECIAL SPONSORS:	
 AWFS ASSOCIATION OF WOODWORKING & FURNISHINGS SUPPLIERS	 ARCHITECTURAL WOODWORKING COMPANY



MATERIAL LAYOUT INSTRUCTIONS

Once you've completed your Bill of Materials, lay out the parts on each corresponding piece of material. Do this by drawing a line vertically and/or horizontally to indicate saw cut. Label each piece with the part name and overall dimensions. Draw an "X" on any scrap pieces. Pay close attention to the grain direction of each piece.

This portion of the competition is worth 65 of 1000 points.

Note: Each square is scaled to 1" Squared.

KEEP FOR CONTEST

SkillsUSA
CALIFORNIA
STATE CONTEST

ITEM: ROLLING CABINET

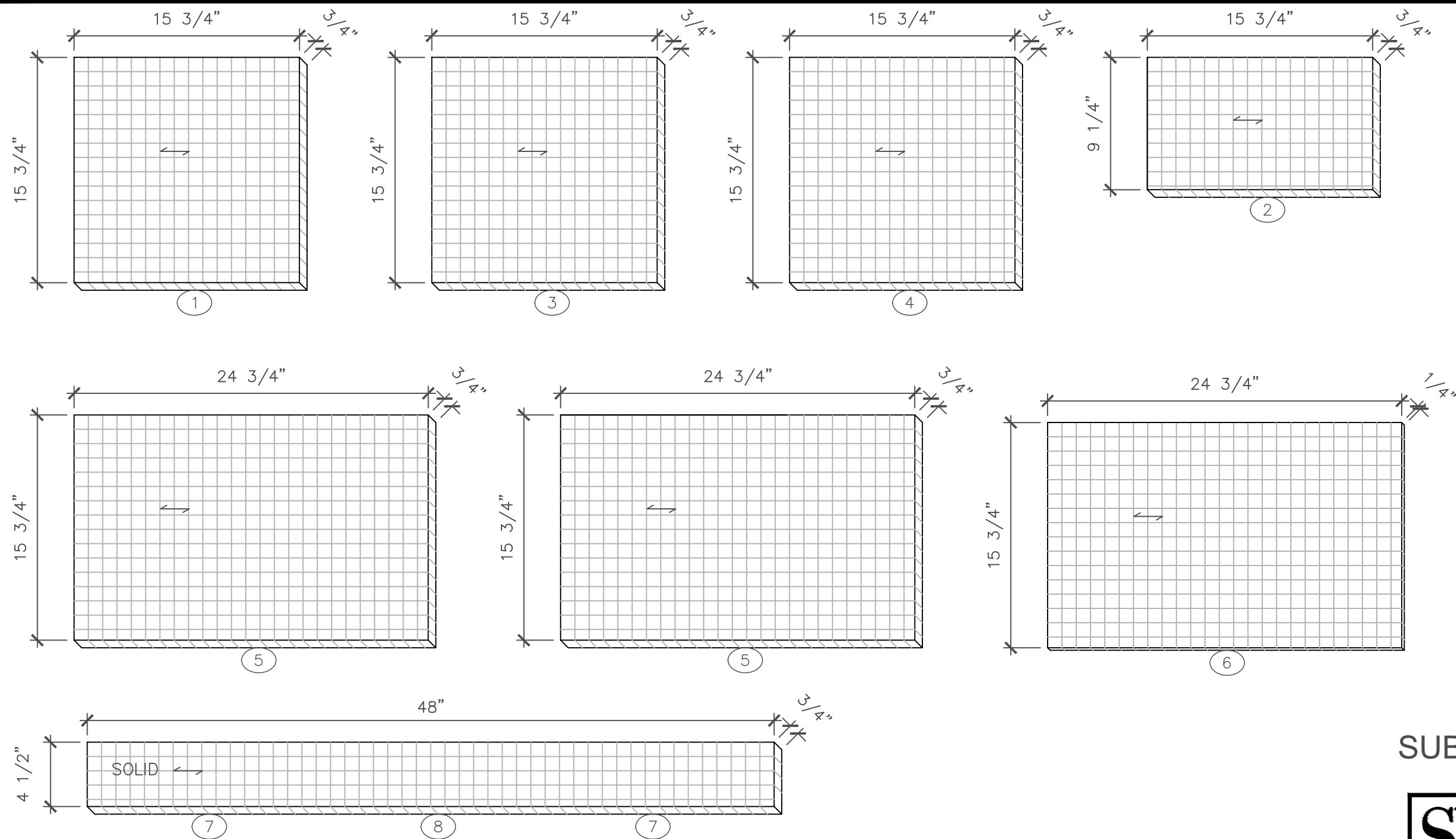
DATE: APRIL COMPETITION DATE: 2022

SCALE: 1-1/2"=1'-0" DWG #:

DRAWN BY: AK **Layout**

SPECIAL SPONSORS:





SUBMIT TO JUDGE

MATERIAL LAYOUT INSTRUCTIONS

Once you've completed your Bill of Materials, lay out the parts on each corresponding piece of material. Do this by drawing a line vertically and/or horizontally to indicate saw cut. Label each piece with the part name and overall dimensions. Draw an "X" on any scrap pieces. Pay close attention to the grain direction of each piece.

This portion of the competition is worth 65 of 1000 points.

Note: Each square is scaled to 1" Squared.

SkillsUSA
CALIFORNIA
STATE CONTEST

ITEM: ROLLING CABINET	
DATE: APRIL	COMPETITION DATE: 2022
SCALE: 1-1/2"=1'-0"	DWG #: Layout A
DRAWN BY: AK	

